

XGV 200 Series Process Valve



Ordering Code

**XGV2** **0** **1** **15** — **NC** **M**

**XGV Series**  
XGV2 Series Process Valve

**Control Method**  
0: Air Operated  
1: External Pilot Solenoid

**Valve Style**  
1: For Compressed Air and air-hydro Circuit Control  
2: For Flow Control  
3: Coolant Valve  
4: Steam Valve

**Nominal Diameter**  
06: G1/8"  
08: G1/4"  
10: G3/8"  
15: G1/2"  
20: G3/4"  
25: G1"  
32: G1-1/4"  
40: G1-1/2"  
50: G2"

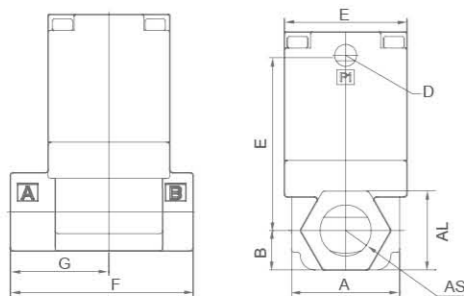
**Control Function**  
NO: Normal Open  
NC: Normal Closed  
CO: Liberty (double acting)

**Seals Material**  
B: NBR  
F: FKM  
P: PTFE  
M: METAL

Specification

| Model                    | GV2*1---BFC<br>seal material: NBR/FKM/EPR   |  |                                  | GV2*2---BFC<br>seal material: NBR/FKM/EPR   |  |     | GV2*3---M<br>seal material: Metal               |  | GV2*4---P<br>seal material: PTFE |  |
|--------------------------|---|--|----------------------------------|---|--|-----|---|--|----------------------------------|--|
|                          | NBR   | FKM  | EPR                              | NBR   | FKM  | EPR | NBR   | FKM  |                                  |  |
| Fluid                    | Air (standard dry); CO <sub>2</sub> (less than 0.7MPa); N <sub>2</sub> ; Turbine oil Hydraulic fluid (40~100mm <sup>2</sup> /s) | Argon Helium Turbine oil, Hydraulic fluid (40~100mm <sup>2</sup> /s) | CO <sub>2</sub> (0.7MPa or more) | Water, oil, Air, Vacuum etc. (-5~60°C)  | Water, oil, etc. Air Operated Only (-5~99°C)                                     |     | Coolant (-5~60°C)<br>(-5~99°C for air operated) | Steam (-5~180°C)   |                                  |  |
| Body / Actuator Material | S.S304/Aluminum alloy   |  |                                  |   |  |     |   |  |                                  |  |
| Seal Material            | NBR   | FKM  | EPR                              | NBR   | FKM  | EPR | NBR   | FKM  |                                  |  |
| Temperature of Medium    | -5~60°C   | -5~99°C  |                                  | -5~60°C   | -5~99°C  |     | -5~60°C   | -5~99°C  | -5~180°C                         |  |
| Ambient Temperature      | -5~50°C (Air operated type 60°C)  |  |                                  |   |  |     |   |  | -5~60°C                          |  |
| Proof Pressure           | 1.5MPa  |  |                                  |   |  |     |   |  |                                  |  |
| Operating Pressure       | 0~1.0MPa  |  |                                  | NO., CO and NC standard orifice dia. low vacuum to 0.5Mpa<br>NC smaller orifice dia. low vacuum to 1.0Mpa |  |     |   | 0~1.0MPa   |                                  | 0~0.9MPa   |
| External pilot air       | Pressure range  | 0.2~0.7MPa   |                                  |   | NC: 0.25~0.7MPa<br>NO./CO.: 0.1+0.25 x Use Pressure~0.25+0.25 x Use Pressure Mpa |     |   | NC: 0.25~0.7MPa<br>NO./CO.: 0.1+0.25 x Use Pressure~0.7Mpa |                                  | NC: 0.3~0.7MPa<br>NO.: 0.1+0.25x Use Pressure<br>~0.25+0.25xUse Pressure Mpa |
|                          | Lubrication temperature   | Not required (use turbine oil Class 1 ISO VG32, f lubricated.)       |                                  |   |  |     |   |  |                                  | -5 to 60°C   |

Overall Dimensions



Dimension Sheet

| Model | Port Size | A   | B    | C    | D   | E   | F   | G    | AS    | AL |
|-------|-----------|-----|------|------|-----|-----|-----|------|-------|----|
| DN 6  | G1/8"     | 28  | 12.5 | 39.5 | 1/8 | 27  | 45  | 24   | 1/8   | 23 |
| DN 8  | G1/4"     | 28  | 12.5 | 39.5 | 1/8 | 27  | 45  | 24   | 1/4   | 23 |
| DN 10 | G3/8"     | 28  | 12.5 | 39.5 | 1/8 | 27  | 45  | 24   | 1/4   | 23 |
| DN 10 | G3/8"     | 37  | 14   | 55   | 1/8 | 42  | 63  | 34   | 3/8   | 27 |
| DN 15 | G1/2"     | 37  | 14   | 55   | 1/8 | 42  | 63  | 34   | 1/2   | 27 |
| DN 20 | G3/4"     | 46  | 17.5 | 60.5 | 1/8 | 50  | 80  | 43   | 3/4   | 33 |
| DN 25 | G1"       | 58  | 20   | 73   | 1/8 | 60  | 90  | 49   | 1     | 43 |
| DN 32 | G1-1/4"   | 68  | 26.5 | 94   | 1/8 | 77  | 105 | 52.5 | 1-1/4 | 48 |
| DN 40 | G1-1/2"   | 85  | 30   | 107  | 1/4 | 96  | 120 | 60   | 1-1/2 | 55 |
| DN 50 | G2"       | 100 | 37   | 123  | 1/4 | 113 | 140 | 70   | 2     | 66 |

PAV100 Series Pneumatic Axial Valve



Ordering Code

**PAV** **101** — **15** — **NC** — **E**

**Series Code**  
PAV Series

**Model**  
101: 101 Female Threaded (Standard)  
102: 102 Flare Connection  
105: 105 Tri-Clamp Ends

**Nominal Diameter**  
10: G3/8"  
15: G1/2"  
20: G3/4"  
25: G1"  
32: G1-1/4"  
40: G1-1/2"  
50: G2"

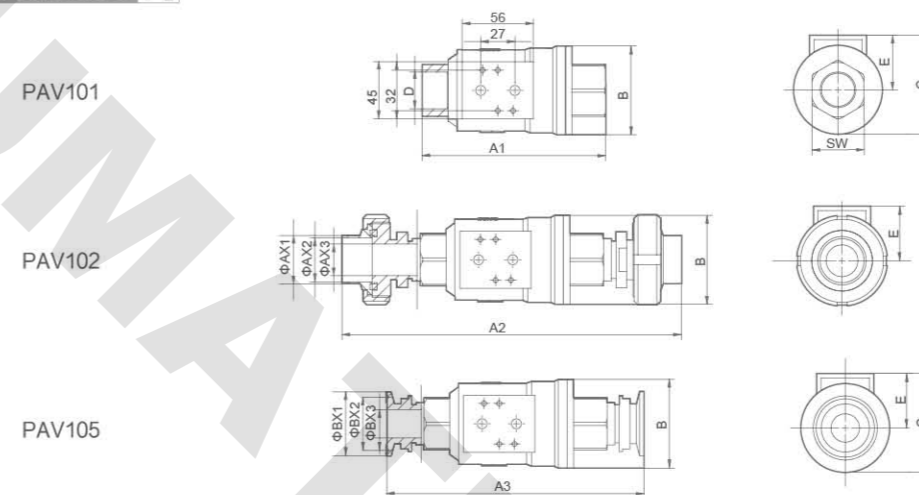
**Control Function**  
NO: Normally Open  
NC1: Normally closed (single acting)  
NC2: Normally closed (Double acting)  
NA: Liberty

**Seat Seals**  
E: EPDM (standard)  
F: FKM

Specification

| Model                                 | PAV101~105: DN10~50                                |
|---------------------------------------|--|
| Temperature of Medium                 | NBR: -10~70°C<br>FKM: -10~150°C<br>EPDM: -10~130°C |
| Temperature of Pilot Valve            | -10~60°C   |
| Working pressure                      | 0~1.6 MPa  |
| Max. Control Pressure of pilot valve  | 1 MPa  |
| Control Pressure Rang (double acting) | 0.35~0.8 MPa                                       |
| Control Pressure Rang (single acting) | 0.45~0.8 MPa                                       |
| Ambient and fluid of Pilot valve      | Filtered Air or gas                                |
| Material of Body                      | S.S.304/316  |
| Seals of Proof of duty                | FPM  |
| Piston Seals                          | FKM/NBR  |

Overall Dimensions



Dimension Sheet

| DN    | Port Size | A1  | A2  | A3  | B   | C   | D     | E  | SW | AX1  | AX2  | AX3 | BX1  | BX2  | BX3 |
|-------|-----------|-----|-----|-----|-----|-----|-------|----|----|------|------|-----|------|------|-----|
| DN 10 | G3/8"     | 98  | 192 | 158 | 46  | 46  | 3/8   | 33 | 22 | 19   | 15.5 | 14  | 50.5 | 43.5 | 10  |
| DN 15 | G1/2"     | 112 | 206 | 172 | 52  | 52  | 1/2   | 35 | 27 | 25.5 | 22   | 14  | 50.5 | 43.5 | 13  |
| DN 20 | G3/4"     | 135 | 233 | 195 | 64  | 64  | 3/4   | 40 | 32 | 32   | 29   | 18  | 50.5 | 43.5 | 19  |
| DN 25 | G1"       | 143 | 245 | 203 | 69  | 69  | 1     | 43 | 41 | 38   | 35   | 22  | 50.5 | 43.5 | 25  |
| DN 32 | G1-1/4"   | 165 | 284 | 235 | 86  | 86  | 1-1/4 | 51 | 50 | 45   | 40   | 27  | 50.5 | 43.5 | 32  |
| DN 40 | G1-1/2"   | 180 | 300 | 250 | 96  | 96  | 1-1/2 | 58 | 56 | 51   | 47.5 | 33  | 64   | 56.5 | 38  |
| DN 50 | G2"       | 207 | 332 | 287 | 108 | 108 | 2     | 62 | 70 | 57   | 53   | 43  | 64   | 56.5 | 50  |