

HSV Series Hand Sliding Valve



HSV-01FM

HSV-03

Ordering Code

HSV

03

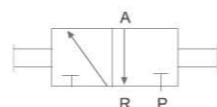
□

Series Code
HSV:Hand Sliding Valve

Port Size
01:G1/8"
02:G1/4"
03:G3/8"
04:G1/2"
06:G3/4"

Port Form
Blank:Two Side Inner Thread
FM:One Side Inner Thread and One Side Outer Thread
FF:Two Side Outer Thread

Graphic Symbol

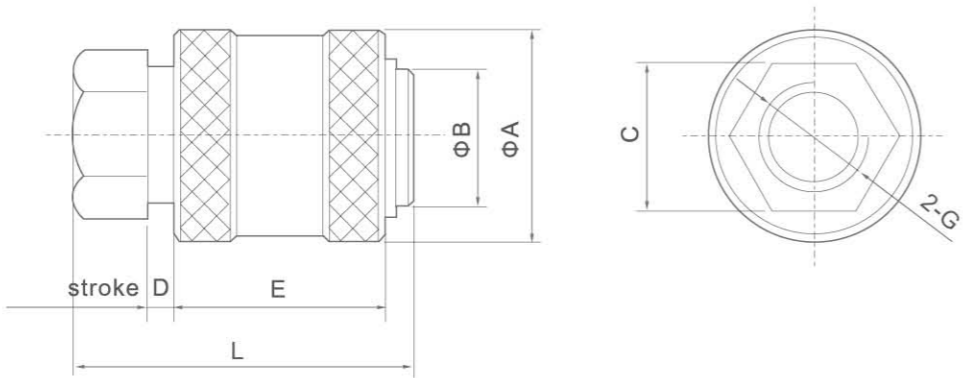


This valve is a two-position three-way hand sliding valve, which is usually installed in the piping to turn on/off air. When it is turned off, the air pressure in the pneumatic system is exhausted simultaneously.

Specification

Model	HSV-01	HSV-02	HSV-03	HSV-04	HSV-06
Port Size	G1/8"	G1/4"	G3/8"	G1/2"	G3/4"
Flow Bore	4mm	7mm	10mm	12mm	18mm
Working Medium	Filtered Air				
Working-pressure	0~1.0MPa				
Ambient Temperature Range	5~60°C				
Working Force	20N			30N	

Overall Dimensions



Dimension Sheet

Model	A	B	C	D	E	L	G
HSV-01	20	13	14	3	20	32	G1/8"
HSV-02	27	18	19	5	32	48	G1/4"
HSV-03	30	21	22	5	32	48	G3/8"
HSV-04	38	24	27	10	40	70	G1/2"
HSV-06	45	32	34	10	45	75	G3/4"

MQ Series Precision Flow Control Valve

NEW!



MQ-M5

Ordering Code

MQ

M5

Series Code
MQ:Precision Flow Control Valve

Port Size
M5:M5

2 Position 2 Way Solenoid Valves

This kind of valve widely used in wide different industry, you can find the valve with different material like brass, stainless steel, engineering plastic, and they are used for pressure range from 0 to 50 bar, temperature from -10°C to 180°C. If there is no current models with your meet, please contact us, we are available to provide specialized valves according to your requirement.

