

KAM Series Check Valve



KAM-08

Ordering Code

KAM

Series Code
KAM: Check Valve

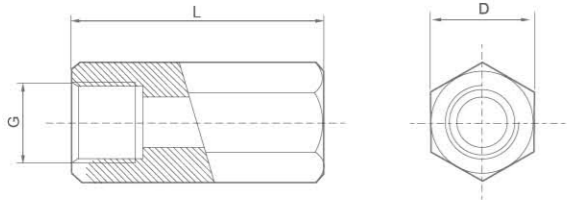
15

Port Size
06:G1/8"
08:G1/4"
10:G3/8"
15:G1/2"

Specification

Model	KAM-06	KAM-08	KAM-10	KAM-15
Port Size	G1/8"	G1/4"	G3/8"	G1/2"
Flow mm ² /S	10	20	40	60
Leak Out Flow(cm ² /min)	≤45	≤60	≤80	≤95
Operation Medium	Compressed Air			
Working Temperature Range	-5~60℃			
Working Pressure	0.05~1.2MPa			

Overall Dimensions



Dimension Sheet

Model	G	L	D
KAM-06	G1/8"	37	14
KAM-08	G1/4"	48	17
KAM-10	G3/8"	50	21
KAM-15	G1/2"	60	24

AS Series Check Valve



AS4000-02

Ordering Code

AS

Series Code
AS:Check Valve

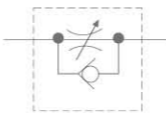
4000

Specification Code
4000

02

Port Size
02:G1/4"
03:G3/8"
04:G1/2"

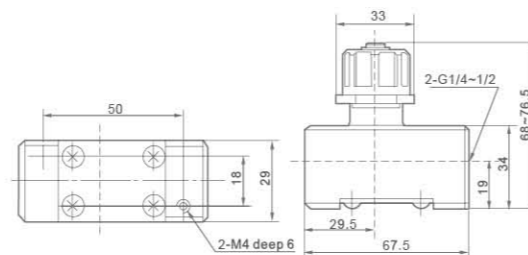
Graphic Symbol



Specification

Model	AS4000-02	AS4000-03	AS4000-04
Port Size	G1/4"	G3/8"	G1/2"
Free Flow Flow(L/min)	1670		
Free Flow Effective Sectional Area(mm ²)	25.5		
Controlled Flow(L/min)	1670		
Controlled Flow Effective Sectional Area(mm ²)	25.5		
Ensured Pressure Resistance	1.5MPa		
Highest Working Pressure	1.0MPa		
Lowest Working Pressure	0.05MPa		
Ambient and Media Temperature	5~60℃		
Regulated Flow Turns	8~9		

Overall Dimensions



AS4000

Note*:Input pressure is 0.5MPa.
Note*:8 turns for AS4000

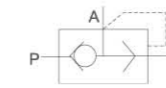
XQ Series Quick Exhaust Valve



XQ170800

The valve is generally installed on the pipeline between the cylinder and reversal valve and near the cylinder, which directly discharge the air from cylinder without passing the reversal valve and thus to achieve the goal of fast reversion of cylinder.The effect on improving cylinder speed is especially obvious.
P: Connect reversal valve export
A: Connect cylinder
R: Connect muffler

Graphic Symbol



Ordering Code

XQ

Series
XQ:Quick Exhaust Valve

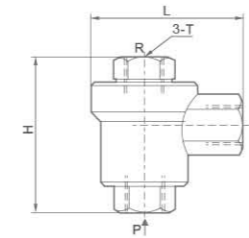
170800

Port Size
170600:G1/8"
170800:G1/4"
171000:G3/8"
171500:G1/2"
172000:G3/4"

Specification

Model	XQ170600	Xq170800	XQ171000	XQ171500
Joint Threaded	G1/8"	G1/4"	G3/8"	G1/2"
Port Size	6mm	6mm	8mm	15mm
Flow	≥0.9m ³ /min	≥0.9m ³ /min	≥2.5m ³ /min	≥4.5m ³ /min
Timerate(Ten Thousand Times)	≤200			
Working Pressure Range	0.12~1.0MPa			
Exchange Times(S)	≤0.03	≤0.03	≤0.04	≤0.05

Overall Dimensions



Dimension Sheet

Model	T	H	L
XQ170600	G1/8"	39	32
XQ170800	G1/4"	51	45
XQ171000	G3/8"	68	62
XQ171500	G1/2"	77	86

QE Series Quick Exhaust Valve



QE-02

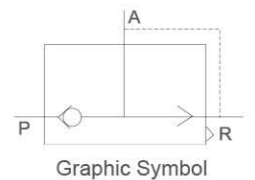
Ordering Code

QE

Series Code
QE:Quick Exhaust Valve

01

Port Size
01:G1/8" 02:G1/4"
03:G3/8" 04:G1/2"
06:G3/4"



Specification

Model	QE-01	QE-02	QE-03	QE-04	QE-06
Port Size	G1/8"	G1/4"	G3/8"	G1/2"	G3/4"
Effective Section Area	16mm ²	27.5mm ²	38mm ²	71mm ²	72.5mm ²
Working Medium	Air				
Working Pressure Range	0~1.0MPa				
Operating Temperature Range	0~60℃				

Dimension Sheet

Model	Bore	L	W	H	A	B	C	D
QE-01	G1/8"	46	20	32	30	4.3	27	40
QE-02	G1/4"	62	25	40	39	5.6	33.5	55
QE-03	G3/8"	62	25	40	39	5.6	33.5	55
QE-04	G1/2"	98	38	64	60	8.5	51	90
QE-06	G3/4"	98	38	64	60	8.5	51	90

Overall Dimensions

