

### SK Series Foot Valve



SK25R7-08

Ordering Code

**SK** **23** **R<sub>7</sub>** **L8**

**Series Code** SK  
**Position and Way Number** 23: Two-position Three-way  
 25: Two-position Five-way  
**Type Code** R<sub>7</sub>:Foot Type  
**Port Size** L6:G1/8"  
 L8:G1/4"  
 L15:G1/2"

Specification

Model	SK25R <sub>7</sub> -L6	SK25R <sub>7</sub> -L8
Diameter	6mm	8mm
Working Medium	Compress Air	
Working Pressure:	0.05~0.8MPa	
Medium Temperature:	-10~55℃	
Environment Temperature:	-5~50℃	
Effective Sectional Area	10mm <sup>2</sup>	20mm <sup>2</sup>
Letting Out Amount	≤50 cm <sup>3</sup> /min	
Operating Power	≤80N	≤100N
Life(ten thousand)	≥200	

### SH Series Manual Valve



SH-402

Ordering Code

**SH** **402** **S**

**Series Code** SH  
**Foot Valve**  
**Port Size** 402: G1/4"  
 403: G3/8"  
**Type Code** Blank:Immobility Type  
 S:Spring Reset Type

Specification

Model	SH-402	SH-402S	SH-403	SH-403S
Working Medium	Air			
Working-pressure Range	0.15~0.9MPa			
Working-temperature Range	0~70℃			
Port Size	G1/4"		G3/8"	
Position Number	Two-position Five-way			

### ST Series Foot Valve



ST-402

Ordering Code

**ST** **402** **S**

**Series Code** ST  
**Foot Valve**  
**Port Size** 402: G1/4"  
 403: G3/8"  
**Type Code** Blank:Immobility Type  
 S:Spring Reset Type

Specification

Model	ST-402	ST-402S	ST-403	ST-403S
Working Medium	Air			
Working-pressure Range	0.15~0.9MPa			
Working-temperature Range	0~70℃			
Port Size	G1/4"		G3/8"	
Position Number	Two-position Five-way			

### RE Series Flow Control Valve



RE-02

Ordering Code

**RE** **01**

**Series Code** RE  
**Ordinary Type**  
**Flow Control Valve**  
**Port Size** 01:G1/8"  
 02:G1/4"  
 03:G3/8"  
 04:G1/2"

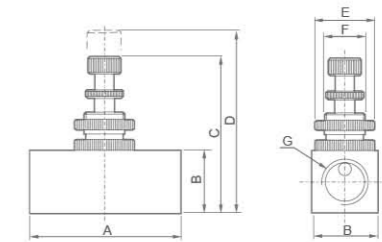


Graphic Symbol

Specification

Model	RE-01	RE-02	RE-03	RE-04
Port Size	G1/8"	G1/4"	G3/8"	G1/2"
Working Medium	Air			
Working-pressure Range	0~0.95MPa			
Operating Temperature Range	0~60℃			

Overall Dimensions



Dimension Sheet

Model	A	B	C	D	E	F	G
RE-01	45	19	43	50	Φ19	M14×1	G1/8
RE-02	45	19	43	50	Φ19	M14×1	G1/4
RE-03	55	25	55	62	Φ25	M18×1	G3/8
RE-04	55	25	55	62	Φ25	M18×1	G1/2

### ASC Series Accurate Type Flow Control Valve



ASC-06

Ordering Code

**ASC** **08**

**Series Code** ASC  
**Accurate Type**  
**Flow Control Valve**  
**Port Size** 06:G1/8"  
 08:G1/4"  
 10:G3/8"  
 15:G1/2"

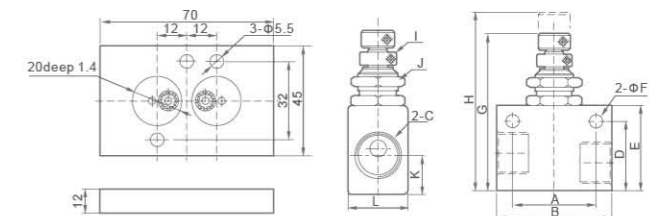


Graphic Symbol

Specification

Model	ASC-06	ASC-08	ASC-10	ASC-15
Port Size	G1/8"	G1/4"	G3/8"	G1/2"
Working Medium	Air			
Working-pressure Range	0~0.95MPa			
Operating Temperature Range	0~60℃			

Overall Dimensions



Dimension Sheet

Model	A	B	C	D	E	F	G	H	I	J	K	L
ASC-06	22	32	G1/8	22	27	4.3	49.7	56.5	M6×0.5	M12×0.75	12	18
ASC-08	26	36	G1/4	22	27	4.3	49.7	56.5	M6×0.5	M12×0.75	12	18
ASC-10	28	40	G3/8	25	30	4.3	52.7	59.5	M6×0.5	M12×0.75	13	22
ASC-15	28	40	G1/2	30	35	4.3	58.7	65.5	M6×0.5	M12×0.75	13.5	26