

### XMAC 2010~5010 Series Air Source Treatment Unit(FR.L Combination)



XMAC4010-04 XMAC2010-02

Ordering Code

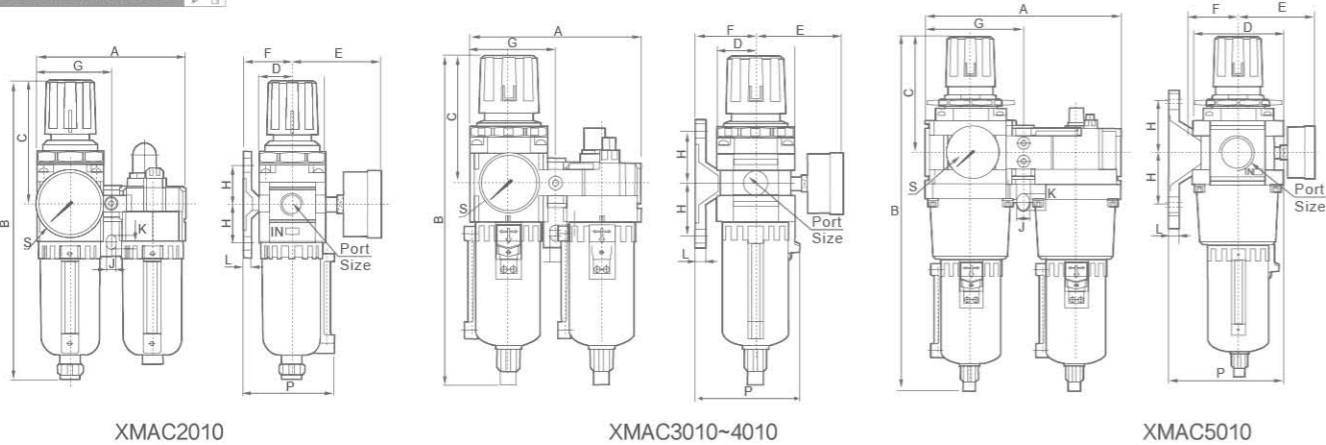
<b>XMA</b>	<b>C</b>	<b>3010</b>	<b>04</b>	<input type="checkbox"/>
<b>Series</b>	<b>Function code</b>	<b>Specification Code</b>	<b>Port Size</b>	<b>Drain Type</b>
XMA Series	FR.L Combination	2010 3010 4010 5010	01:G1/8" 02:G1/4" 03:G3/8" 04:G1/2" 06:G3/4" 10:G1"	Blank:Manual Drain Type D:Auto Drain Type (Available for 3000 or above)



Specification

Model	XMAC2010-01	XMAC2010-02	XMAC3010-02	XMAC3010-03	XMAC4010-03	XMAC4010-04	XMAC4010-06	XMAC5010-06	XMAC5010-06
Ensured Pressure Resistance	1.5MPa(15kgf/cm <sup>2</sup> )								
Highest Working Pressure	1.0MPa(10kgf/cm <sup>2</sup> )								
Operating Temperature Range	5~60℃								
Filter Precision	25μ & 5μ & 50μ								
Recommended Oil Use	Turbine NO.1 Oil ISOVG32								
Container Material	Aluminum Die Casting								
Pressure Regulating Range	0.05~0.85MPa(0.05~0.85kgf/cm <sup>2</sup> )								
Valve Type	With Overflow								
Assembly	Filter with pressure reducer	XMAW2000	XMAW3000	XMAW4000	XMAW4000-06	XMAW5000			
	Lubricator	XMAR2000	XMAR3000	XMAR4000	XMAR4000-06	XMAR5000			
Rated Flow(L/min)	500	1700	3000	3000	4000				
Port Size(G)	1/8'	1/4'	1/4'	3/8'	3/8'	1/2'	3/4'	3/4'	1'

Overall Dimensions



Dimension Sheet

Model	Port Size(G)	A	B	C	D	E	F	G	H	J	K	L	P	S
XMAC2010	G1/8"-G1/4"	90	186.5	78	40	56.8	30	45	24	5.5	8.5	5	56	G1/8
XMAC3010	G1/4"-G3/8"	117	232.5	92.5	53	60.8	41	58.5	35	7	11	7	69.5	G1/8
XMAC4010	G1/2"	154	277	112	70	65.5	50	77	40	9	13	7	87.5	G1/4
XMAC4010-06	G3/4"	164	282.5	114	70	69.5	50	82	40	9	13	7	87.5	G1/4
XMAC5010	G3/4"-G1"	195	353.5	116	90	75.5	69.8	97.5	50	12	16	10.5	115	G1/4

### XMAW 2000~5000 Series Filter & Regulator



XMAW4000-04 XMAW2000-02

Ordering Code

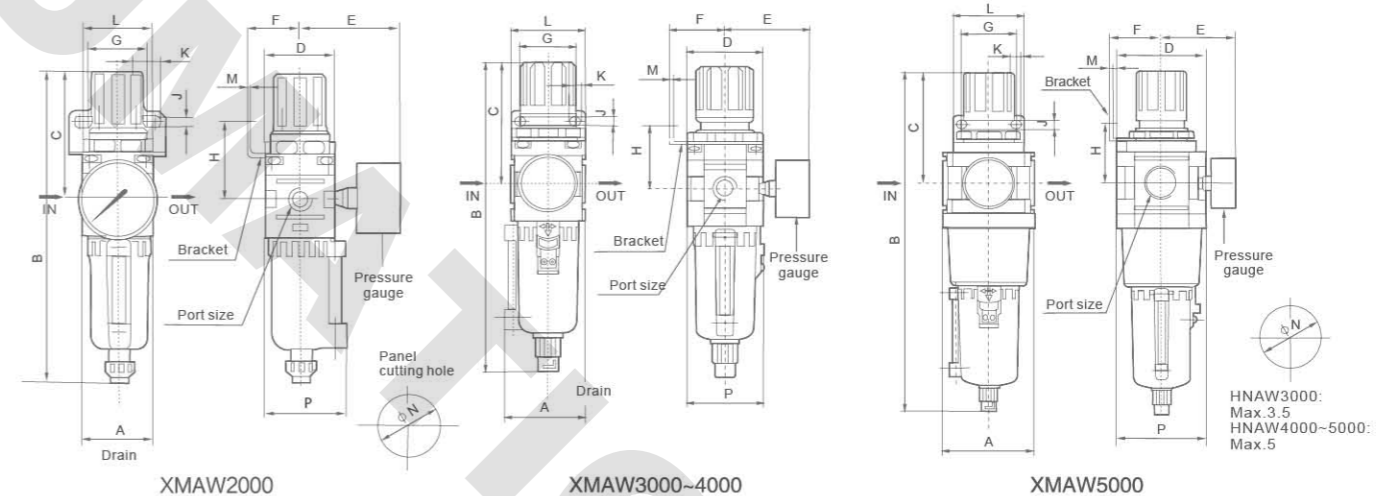
<b>XMA</b>	<b>W</b>	<b>3000</b>	<b>04</b>	<input type="checkbox"/>
<b>Series</b>	<b>Function code</b>	<b>Specification Code</b>	<b>Port Size</b>	<b>Drain Type</b>
XMA Series	Filter&Regulator	2000 3000 4000 5000	01:G1/8" 02:G1/4" 03:G3/8" 04:G1/2" 06:G3/4" 10:G1"	Blank:Manual Drain Type D:Auto Drain Type (Available for 3000 or above)



Specification

Model	XMAW2000-01	XMAW2000-02	XMAW3000-02	XMAW3000-03	XMAW4000-03	XMAW4000-04	XMAW4000-06	XMAW5000-06	XMAW5000-10
Ensured Pressure Resistance	1.5MPa(15kgf/cm <sup>2</sup> )								
Highest Working Pressure	1.0MPa(10kgf/cm <sup>2</sup> )								
Operating Temperature Range	5~60℃								
Filter Precision	25μ & 5μ & 50μ								
Container Material	Aluminum Die Casting								
Pressure Regulating Range	0.05~0.85MPa(0.5~0.85kgf/cm <sup>2</sup> )								
Valve Type	With Overflow								
Rated Flow(L/min)	550	2000	4000	4500	5500				
Port Size(G)	1/8'	1/4'	1/4'	3/8'	3/8'	1/2'	3/4'	3/4'	1'
Pressure Gauge Size	1/8	1/8	1/4	1/4	1/4				

Overall Dimensions



Dimension Sheet

Model	Port Size(G)	A	B	C	D	E	F	G	H	J	K	L	M	P
XMAW2000	G1/8"-G1/4"	40	186.5	78	40	56.8	30	34	43.5	5.4	15.4	55	2.3	46
XMAW3000	G1/4"-G3/8"	57.5	232.5	92.5	53	60.8	39	40	46	6.5	8	53	2.3	55
XMAW4000	G1/2"	74	278	112	70	70.5	49.2	54	53.5	8.5	10.5	70	2.3	72.5
XMAW4000-06	G3/4"	76.5	282	114	70	70.5	49.2	54	55.5	8.5	10.5	70	2.3	72.5
XMAW5000	G3/4"-G1"	90	355	116	90	75.5	49.2	54	62	8.5	10.5	70	2.3	90