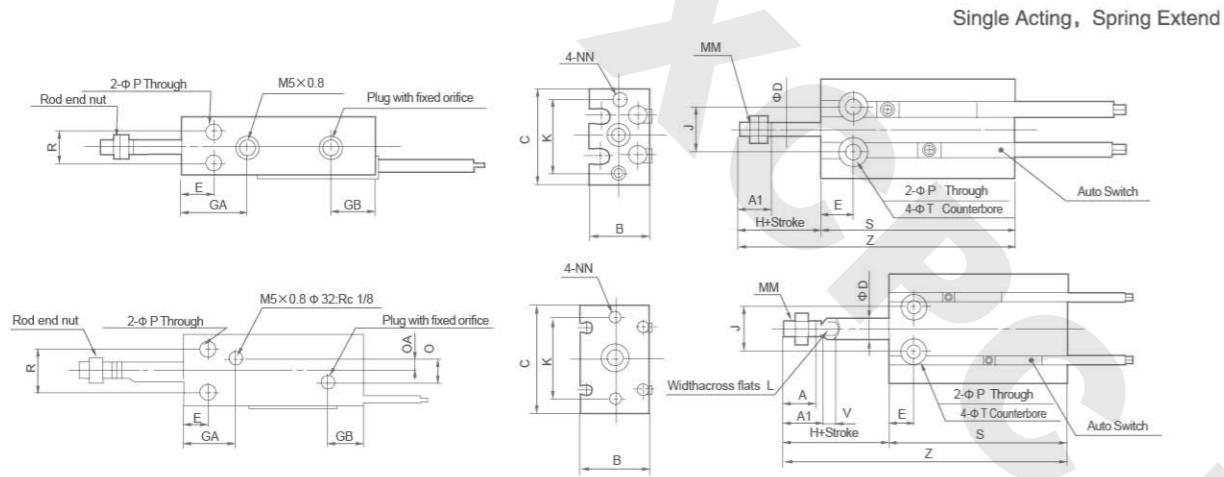
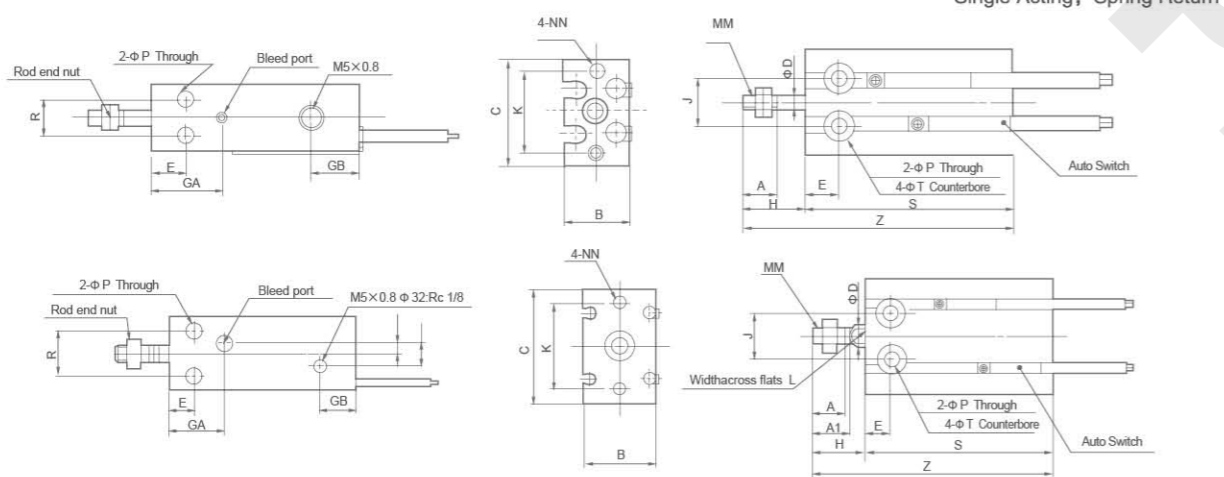


### CU Series Free Installation Cylinder

Overall Dimensions



Overall Dimensions



Dimension Sheet

Bore size(mm)	A	A1	B	C	D	E	GA	GB	H	K	J	L	MM	NN	P
6	7	-	13	22	3	7	15	10	13	17	10	-	M3×0.5	M3×0.5 (depth) 5	3.2
10	10	-	15	24	4	7	16.5	10	16	18	11	-	M4×0.7	M3×0.5 (depth) 5	3.2
16	11	12.5	20	32	6	7	16.5	11.5	16	25	14	5	M5×0.8	M4×0.7 (depth) 6	4.5
20	12	14	26	40	8	9	19	12.5	19	30	16	6	M6×1.0	M5×0.8 (depth) 8	5.5
25	15.5	18	32	50	10	10	21.5	13	23	38	20	8	M8×1.25	M5×0.8 (depth) 8	5.5
32	19.5	22	40	62	12	11	23	12.5	27	48	24	10	M10×1.25	M6×1.0 (depth) 9	6.6

Bore size (mm)	Q	QA	R	T	V (Note)	Without Auto Switch						With Auto Switch					
						S			Z			S			Z		
						5st	10st	15st	5st	10st	15st	5st	10st	15st	5st	10st	15st
6	-	-	7	6 (depth) 4.8	-	38	43	48	56	66	76	38	43	48	56	66	76
10	-	-	9	6 (depth) 5	-	41	46	56	62	72	87	41	46	56	62	72	87
16	4	2	12	7.6 (depth) 6.5	3.5	45	50	60	66	76	91	45	50	60	66	76	91
20	9	4.5	16	9.3 (depth) 8	5	41	46	56	65	75	90	51	56	66	75	85	100
25	9	4.5	20	9.3 (depth) 9	5	45	50	60	73	83	98	55	60	70	83	93	108
32	13.5	4.5	24	11 (depth) 11.5	5	47	52	62	79	89	104	57	62	72	89	99	114

Note) "V" Only for Single Acting, Spring Extend

### STM Series Slide Bearing Cylinder



STMB 16 x 50

STMS 16 x 125

Ordering Code

**STM** Series Code Sliding Type  
**B** Mounting type B: Body fixed Type S: Sliding Block Fixed Type  
**16** × **50** Cylinder Bore Stroke  
 10mm 16mm 20mm 25mm  
 0~250mm

Specification

	10	16	20	25
Bore(mm)	10	16	20	25
Motion Pattern	Double action			
Working Medium	Air			
Operating Temperature Range	-5~+70 C			
Operating Pressure Range	1.0~9.0kgf/cm <sup>2</sup>			
Ensured Pressure Resistance	13.5kgf/cm <sup>2</sup>			
Operating Speed Range	50~200mm/s			
Buffer Type	Shock Absorter			
Lubrication	NO			
Non-rotating Precision	±0.1°		±0.05°	
Port size	M5×0.8			G1/8"

Standard Stroke

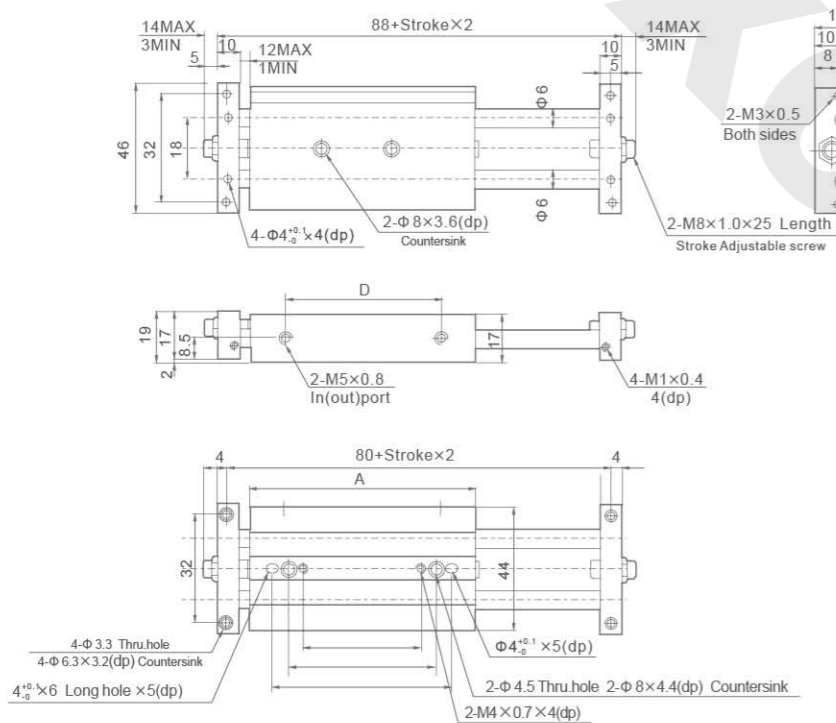
Bore size(mm)	Standard stroke(mm)										
10	25	50	75	100							
16	25	50	75	100	125	150	175	200			
20	25	50	75	100	125	150	175	200	250		
25	25	50	75	100	125	150	175	200	250		

Thoretical thrust

Bore size(mm)	Rod size (mm)	Pressure area (cm <sup>2</sup> )	Operating pressure(Kgf/cm <sup>2</sup> )								
			1	2	3	4	5	6	7	8	9
10	6	0.50	0.48	0.95	1.43	1.9	2.38	2.85	3.43	3.8	4.28
16	8	1.51	1.43	2.87	4.30	5.74	7.17	8.61	10.04	11.48	12.91
20	10	2.36	2.24	4.48	6.73	8.97	11.21	13.45	15.69	17.94	20.18
25	12	3.78	3.51	7.18	10.77	14.36	17.96	21.55	25.14	28.73	32.32

### STM Series Slide Bearing Cylinder

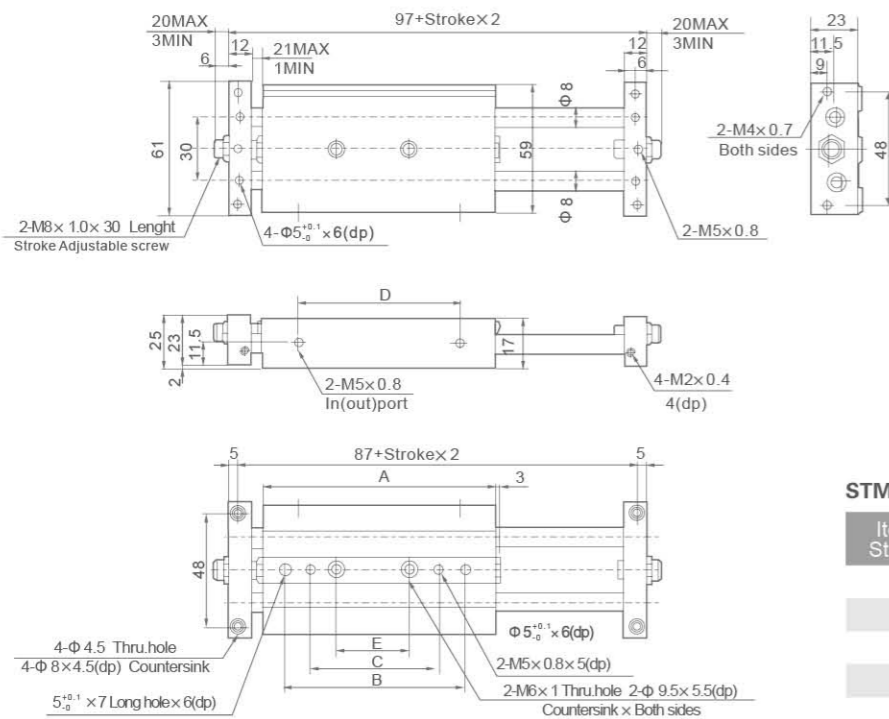
Overall Dimensions



STMB-10

Item/Stroke	25	50	75	100
A	81	106	131	156
B	65	85	85	85
C	35	60	60	60
D	46	71	96	121
E	15	40	40	40

Overall Dimensions

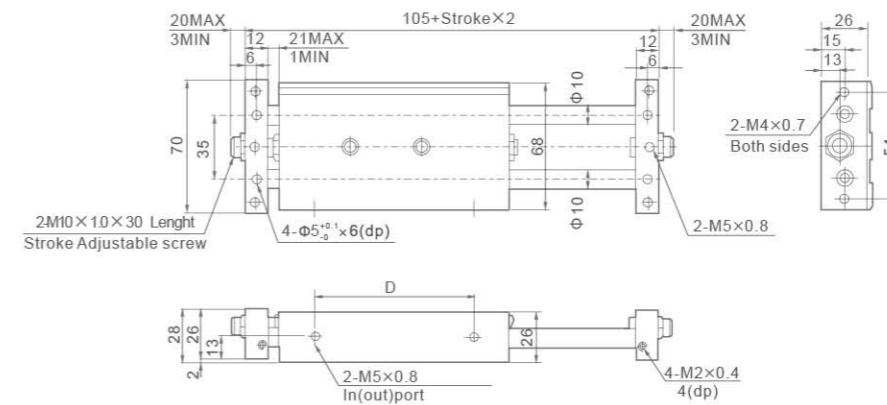


STMB-16

Item/Stroke	25	50	75	100	125	150	175	200
A	86	111	136	161	186	211	236	261
B	55	70	105	130	150	150	150	150
C	-	-	75	100	120	120	120	120
D	48	73	98	123	148	173	198	223
E	25	50	45	70	90	90	90	90

### STM Series Slide Bearing Cylinder

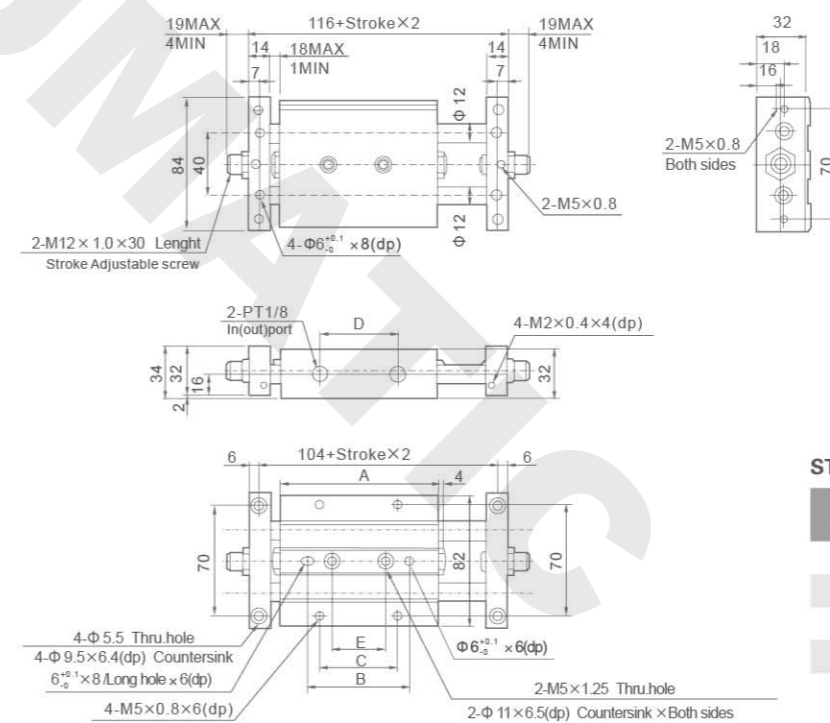
Overall Dimensions



STMB-20

Item/Stroke	25	50	75	100	125	150	175	200	250
A	94	119	144	169	194	219	244	269	319
B	60	85	110	135	150	150	150	150	150
C	50	50	75	100	120	120	120	120	120
D	53	78	103	128	153	178	203	228	278
E	35	45	45	70	90	90	90	90	90

Overall Dimensions

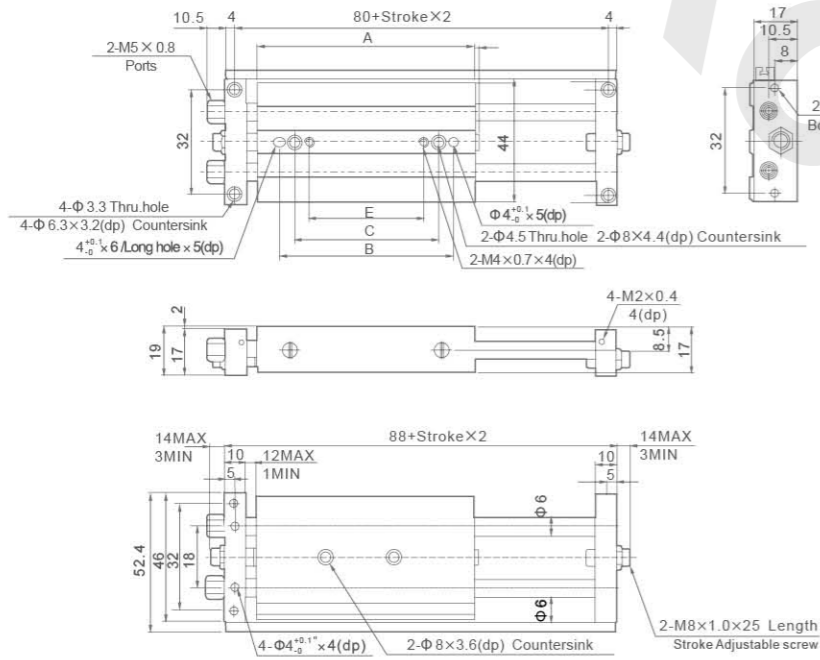


STMB-25

Item/Stroke	25	50	75	100	125	150	175	200	250
A	101	126	151	176	201	226	251	276	326
B	65	90	115	140	140	140	140	140	140
C	50	50	75	100	100	100	100	100	100
D	50	75	100	125	150	175	200	225	175
E	35	45	45	70	95	100	100	100	100

### STM Series Slide Bearing Cylinder

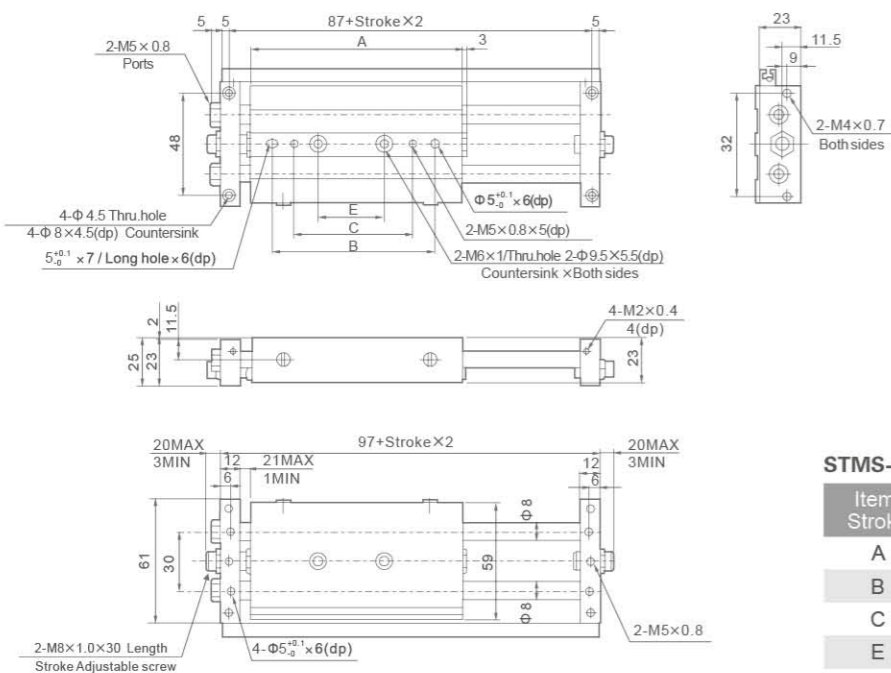
Overall Dimensions



STMS-10

Item/Stroke	25	50	75	100
A	81	106	131	156
B	65	85	85	85
C	35	60	60	121
E	15	40	40	40

Overall Dimensions

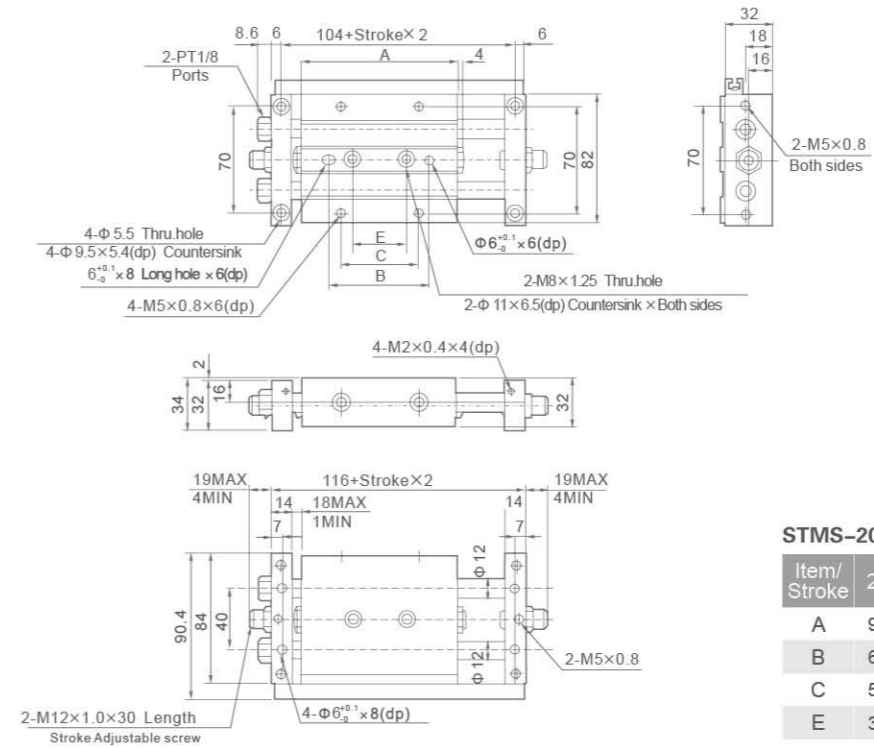


STMS-16

Item/Stroke	25	50	75	100	125	150	175	200
A	86	111	136	161	186	211	236	261
B	55	70	105	130	150	150	150	150
C	-	-	75	100	120	120	120	120
E	25	50	45	70	90	90	90	90

### STM Series Slide Bearing Cylinder

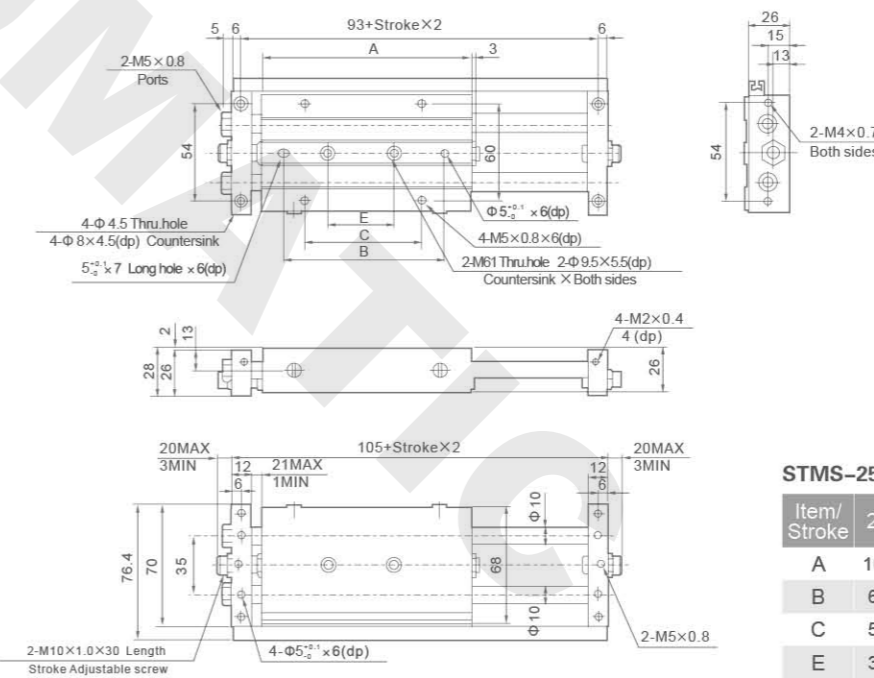
Overall Dimensions



STMS-20

Item/Stroke	25	50	75	100	125	150	175	200	250
A	94	119	144	169	194	219	244	269	319
B	60	85	110	135	150	150	150	150	150
C	50	50	75	100	120	120	120	120	120
E	35	45	45	70	90	90	90	90	90

Overall Dimensions



STMS-25

Item/Stroke	25	50	75	100	125	150	175	200	250
A	101	126	151	176	201	226	251	276	326
B	65	90	115	140	140	140	140	140	140
C	50	50	75	100	100	100	100	100	100
E	35	45	45	70	95	100	100	100	100