

### CXS Series Double-Shaft Cylinder



CXS 20 × 50

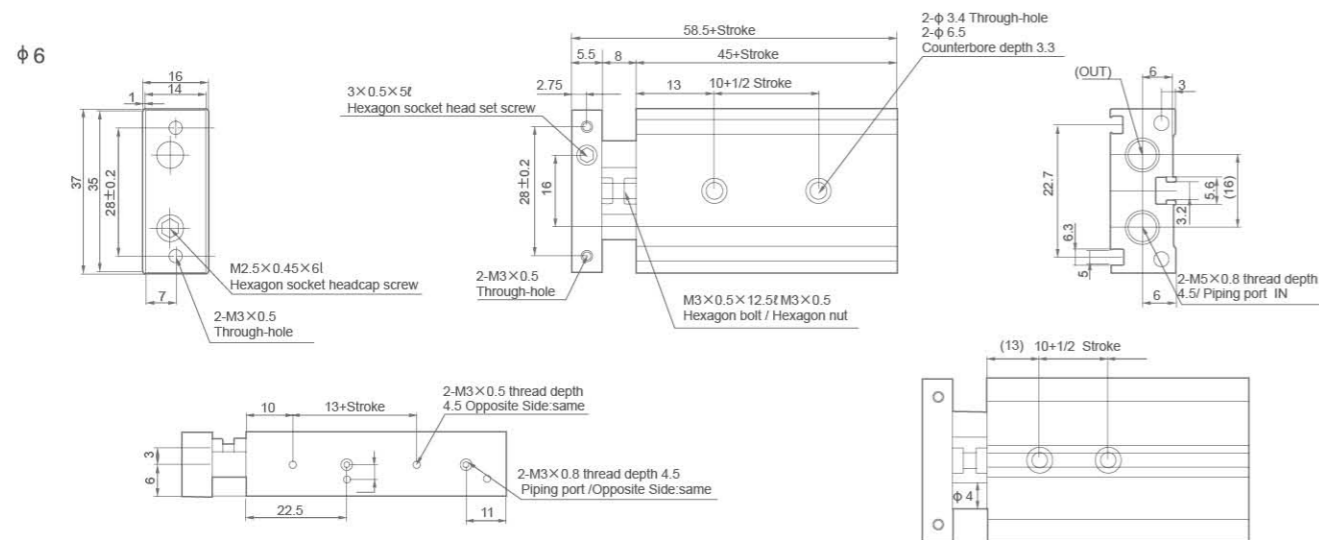
Ordering Code

<b>CXS</b>	<b>M</b>	<b>20</b>	×	<b>50</b>
<b>Series Code</b>	<b>Type Of Bearing</b>	<b>Cylinder Bore</b>	<b>Stroke</b>	
CXS:Attach Magnet Type	M:Slide Bearing Type L:Ball Guide Bearing Type	6mm 10mm 15mm 20mm 25mm 32mm	Φ6: 0~50mm Φ10~32: 0~100mm	

Specification

Bore(mm)	6	10	15	20	25	32
Working Medium	Air					
Motion Pattern	Double action					
Ensured Pressure Resistance	1.05Mpa(10.7kgf/cm <sup>2</sup> )					
Max.pressure	0.7Mpa(7.1kgf/cm <sup>2</sup> )					
Min.pressure	0.15Mpa(1.5kgf/cm <sup>2</sup> )	0.1Mpa(1.0kgf/cm <sup>2</sup> )				0.05Mpa(0.51kgf/cm <sup>2</sup> )
Operating Temperature Range	5~+60°C					
Buffering	Both ends buffer					
Structure	Double Power					
Stroke Adjustable Range	Return Stroke: 0~5mm					
Bearing	Slide Bearing/Ball Guide Bearing					
Precision of Slide Bearing	±0.1	±0.15	±0.13	±0.11	±0.1	±0.08
Piston rod Non-rotating Ball Guide Bearing	±0.1	±0.1	±0.07	±0.06	±0.05	±0.04
Port size	M5×0.8					G1/8"

Overall Dimensions

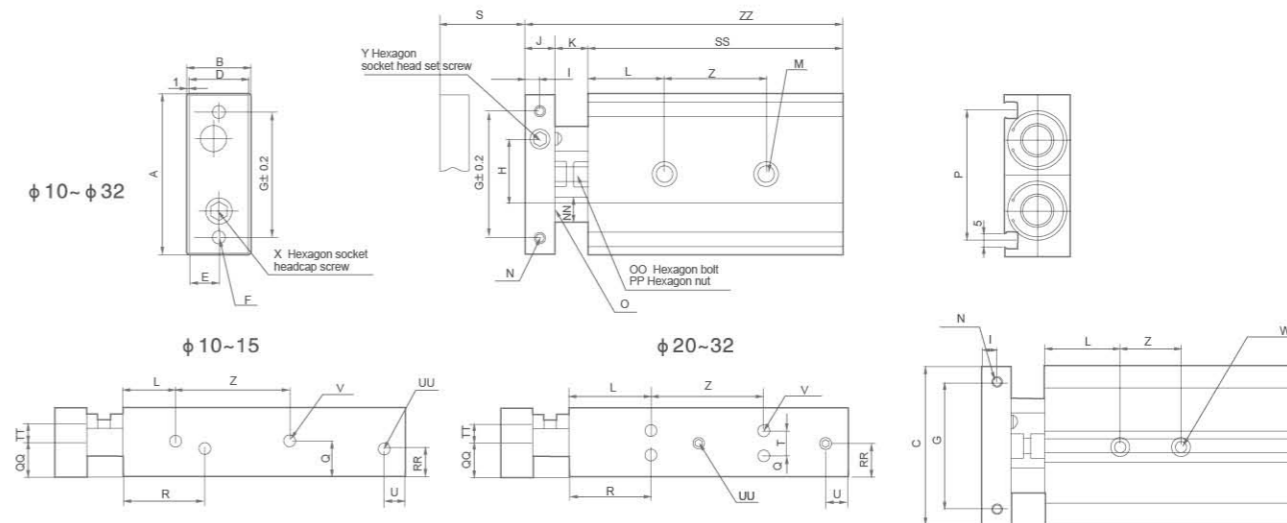


Dimension Sheet

Model	Stroke	10+1/2 Stroke	13+Stroke	45+Stroke	58.5+Stroke
CXS□6-10	10	15	23	55	68.5
CXS□6-20	20	20	33	65	78.5
CXS□6-30	30	25	43	75	88.5
CXS□6-40	40	30	53	85	95.5
CXS□6-50	50	35	63	95	108.5

### CXS Series Double-Shaft Cylinder

Overall Dimensions



Dimension Sheet

Model	A	B	C	D	E	F	G	H	I	J	K	L	M	N	NN	O	OO	P
CXS□10-10 /20/30/40/50	46	17	44	15	7.5	2-M4×0.7	35	20	4	8	9	20	2-Φ3.4/through 2-Φ6.5 Counterbore depth3.3	2-M3×0.5 thread depth 5	Φ6	5	M4×0.7×14.5L	33.6
CXS□15-10 /20/30/40/50	58	20	56	18	9	2-M5×0.8	45	25	5	10	9	30	2-Φ4.3/through 2-Φ8 Counterbore depth4.4	2-M4×0.7 thread depth 6	Φ8	6	M4×0.7×14.5L	48
CXS□20-10/20/30/40/50/75/100	64	25	62	23	11.5	2-M5×0.8	50	28	6	12	12	30	2-Φ5.5/through 2-Φ9.5 Counterbore depth5.3	2-M4×0.7 thread depth 6	Φ10	8	M6×1.0×18.5L	53
CXS□25-10/20/30/40/50/75/100	80	30	78	28	14	2-M6×1.0	60	35	6	12	12	30	2-Φ6.9/through 2-Φ11 Counterbore depth6.3	2-M5×0.8 thread depth 7.5	Φ12	10	M6×1.0×18.5L	64
CXS□32-10/20/30/40/50/75/100	98	38	96	35	18	2-M6×1.0	75	44	8	16	14	30	2-Φ6.9/through 2-Φ11 Counterbore depth6.3	2-M5×0.8 thread depth 8	Φ16	13	M8×12.5×23L	76

Model	PP	Q	QQ	R	RR	T	TT	U	UU	V	W	X	Y
CXS□10-10 /20/30/40/50	M4×0.7	8.5	7	30	7	-	5	8	4-M5×0.8 thread depth 4.5	4-M3×0.5 thread depth 4.5	4-M3×0.5 thread depth 4.5	M3×0.5×10L	M3×0.5×5L
CXS□15-10 /20/30/40/50	M4×0.7	10	10	38.5	10	-	5	8	4-M5×0.8 thread depth 4.5	4-M4×0.7 thread depth 5	2-M5×0.8 thread depth 8	M5×0.8×10L	M4×0.7×4L
CXS□20-10/20/30/40/50/75/100	M6×1.0	7.75	12.5	45	7.75	9.5	6.5	8	4-M5×0.8 thread depth 4.5	8-M4×0.7 thread depth 6	2-M6×1.0 thread depth 10	M6×1.0×12L	M5×0.8×5L
CXS□25-10/20/30/40/50/75/100	M6×1.0	8.5	15	46	15	13	9	9	4-1/8 thread depth 6.5	8-M5×0.8 thread depth 7.5	2-M8×1.25 thread depth 12	M6×1.0×14L	M6×1.0×5L
CXS□32-10/20/30/40/50/75/100	M8×1.25	9	19	56	19	20	11.5	10	4-1/8 thread depth 6.5	8-M5×0.8 thread depth 7.5	2-M8×1.25 thread depth 12	M8×1.25×16L	M8×1.25×8L

Model	S	SS	Z	ZZ	Model	S	SS	Z	ZZ	Model	S	SS	Z	ZZ	Model	S	SS	Z	ZZ				
CXS□10-10	10	65	82	25	CXS□15-10	10	70	89	30	CXS□20-10	10	80	104	40	CXS□25-10	10	82	106	40	CXS□32-10	10	92	122
CXS□10-20	20	75	92	35	CXS□15-20	20	80	99	40	CXS□20-20	20	90	114	50	CXS□25-20	20	95	116	50	CXS□32-20	20	102	132
CXS□10-30	30	85	102	40	CXS□15-30	30	90	109	50	CXS□20-30	30	100	124	60	CXS□25-30	30	102	126	60	CXS□32-30	30	112	142
CXS□10-40	40	95	112	45	CXS□15-40	40	100	119	60	CXS□20-40	40	110	134	70	CXS□25-40	40	112	136	70	CXS□32-40	40	122	152
CXS□10-50	50	105	122	50	CXS□15-50	50	110	129	70	CXS□20-50	50	120	144	80	CXS□25-50	50	122	146	80	CXS□32-50	50	132	162
										CXS□20-75	75	145	169	90	CXS□25-75	75	147	171	90	CXS□32-75	75	157	187
										CXS□20-100	100	170	194	100	CXS□25-100	100	172	196	100	CXS□32-100	100	182	212