

### CA2 Series Standard Cylinder



CA2B 40 x 100

Ordering Code

CA2

40

×

100

Series Code

CA2B: Normal Type  
CDA2B: Attach Magnet Type

Cylinder Bore

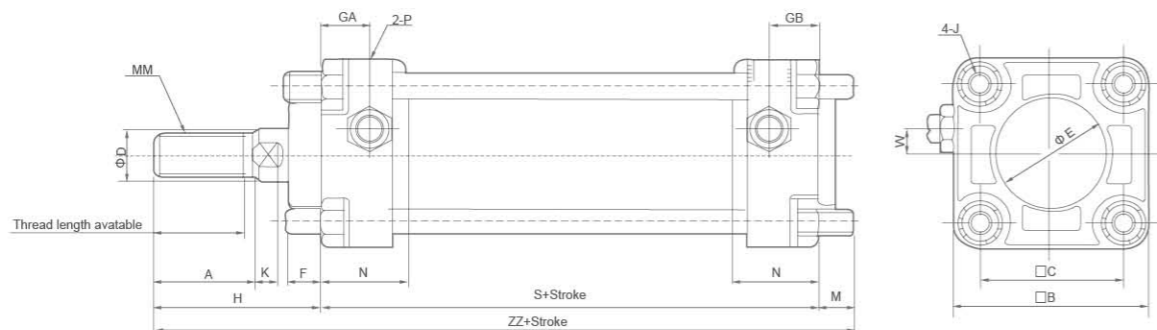
40mm-100mm

Stroke

Specification

Bore(mm)	40	50	63	80	100
Working Medium	Air				
Motion Pattern	Double action Type				
Ensured Pressure Resistance	15.3kgf/cm <sup>2</sup> (1.5Mpa)				
Max.pressure	10.2kgf/cm <sup>2</sup> (1.0Mpa)				
Min.pressure	0.5kgf/cm <sup>2</sup> (0.05Mpa)				
Operating Temperature Range °C	5~+60 °C				
Operating Speed Range	50~500mm/s				
Buffering	Air buffering				
Margin of Stroke Error(mm)		~0~250 <sup>+10</sup> <sub>0</sub>	251~1000 <sup>+1.4</sup> <sub>0</sub>	1001~1500 <sup>+1.8</sup>	
Port size	G1/4"	G3/8"	G3/8"	G1/2"	G1/2"

Overall Dimensions



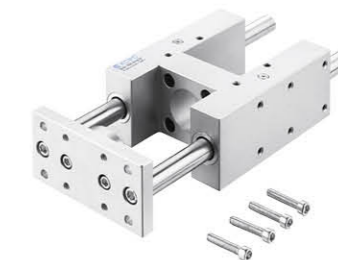
Dimension Sheet

Bore/Symbol	Stroke range	Thread Length Available	A	□B	□C	ΦD	ΦE	F	GA	GB	J	K	M	MM	N	P	S	W	H	ZZ
40	~500	27	30	60	44	16	32	10	15	15	M8×1.25	6	11	M14×1.5	27	1/4	84	8	51	146
50	~600	32	35	70	52	20	40	10	17	17	M8×1.25	7	11	M18×1.5	27	3/8	90	0	58	159
63	~600	32	35	85	64	20	40	10	17	17	M10×1.25	7	14	M18×1.5	31	3/8	98	0	58	170
80	~750	37	40	102	78	25	52	14	21	21	M12×1.75	11	17	M22×1.5	37	1/2	116	0	71	204
100	~750	37	40	116	92	30	52	14	21	21	M12×1.75	11	17	M26×1.5	40	1/2	126	0	72	215

### XEN/XENG Series Guide Units



XEN 25-100-GF



XENG 40-100-GF

Ordering Code

XENG

50

—

100

—

GF

Series Code

XEN: Guided Unit for ISO 6432  
XENG: Guided Unit for ISO 15552

Bore

XEN: 8mm~25mm  
XENG: 32mm~100mm

Stroke

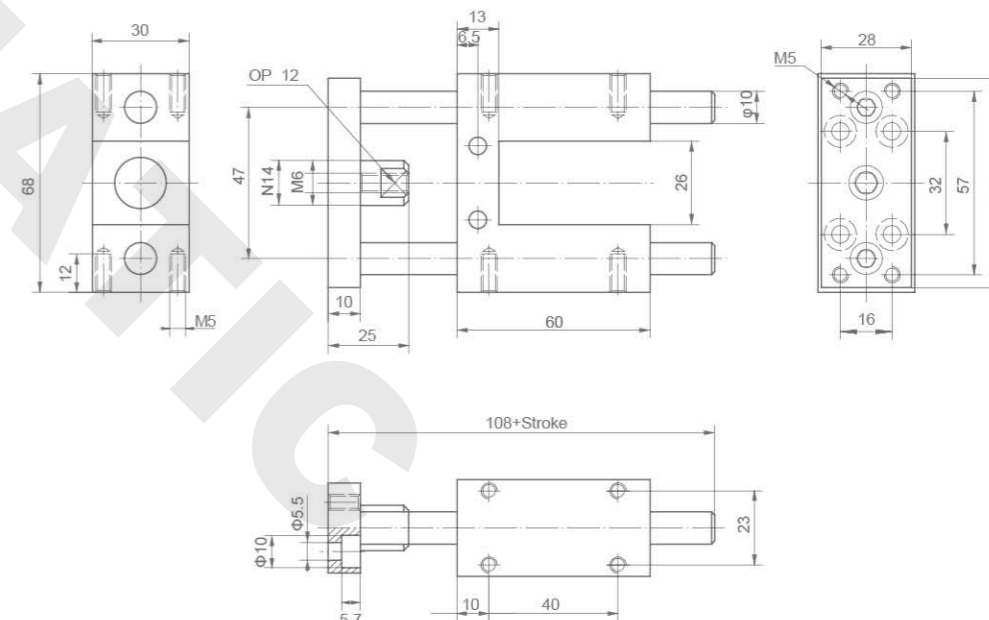
Guide

GF: Plain-bearing Guide  
KF: Recirculating Ball Bearing Guide

Specification

Model	XEN-...				XENG-...					
Bore Φ	8/10	12/16	20	25	32	40	50	63	80	100
Stroke(mm)	1 ... 100	1 ... 200	1 ... 250		1 ... 500					
Guide	Plain-bearing Guide									
Installation	Recirculating Ball									
Installation position	Any									
Operating Range Temperature	-20~+80 °C									

Overall Dimensions



XEN12-16