

XVHS Series Venting Safety Lock-out Valve



XVHS2000-02



XVHS3000-03



Graphic Symbol



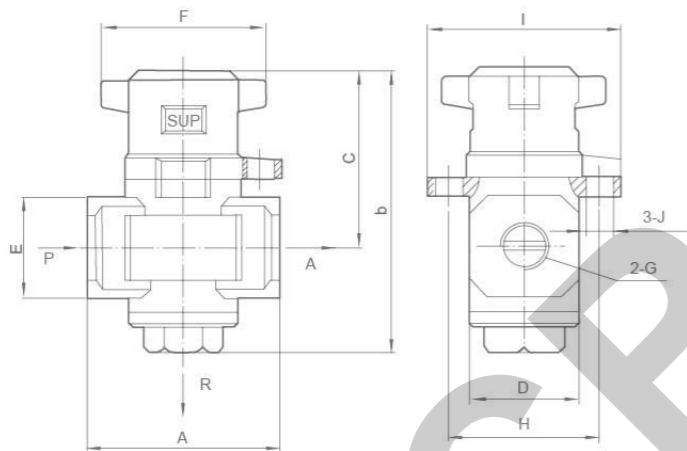
Ordering Code

X	VHS	3000	03
XCPC Product	Venting Softing Lock-out Valve Code	Body Size	Port Size
		2000	01:G1/8"
		3000	02:G1/4"
		4000	03:G3/8"
		5000	04:G1/2"
			06:G3/4"
			10:G1"

Features

It is easy to be maintained because it can realise the pressure of the hypo-pressure side when it is working. It can ensure the safety of the maintenance man because of the lockup function.

Overall Dimensions



Dimension Sheet

Model	G	Vent size	A	B	C	D	E	F	H	I	J
XVHS2000-01	G1/8	G1/8	40	59	39	28	22	40	32	41	φ6
XVHS2000-02	G1/4	G1/8	40	59	39	28	22	40	32	41	φ6
XVHS3000-02	G1/4	G1/4	53	78	49	30	28	45	41.5	53	φ7.5
XVHS3000-03	G3/8	G1/4	53	78	49	30	28	45	41.5	53	φ7.5
XVHS4000-03	G3/8	G3/8	70	84	52	36	36	45	41.5	53	φ7.5
XVHS4000-04	G1/2	G3/8	70	84	52	36	36	45	41.5	53	φ7.5
XVHS5000-06	G3/4	G1/2	90	136	72	54	48	68	77	90	φ8.5
XVHS5000-10	G1	G1/2	90	136	72	54	48	68	77	90	φ8.5

XAV 2000~5000 Series Slow Start Valve



XAV3000-03

Ordering Code

X	AV	2000	02	G	AC220V	G
XCPC Product	Solv Start Valve Code	Body Size	Thread Type	Optional	Standard Voltage	Plug Mode
		2000	Blank:G	Blank:Without Gauge	AC110V	G:Grommet type
		3000	R:RC	G:With Gauge	AC220V	D:DIN Type
		4000	N:NPT		DC12V	
		5000			DC24V	
	Type of Control				Other	
	Blank: Solenoid					
	A: Pneumatic					
			Port Size			
			02:G1/4"			
			03:G3/8"			
			04:G1/2"			
			06:G3/4"			
			10:G1"			

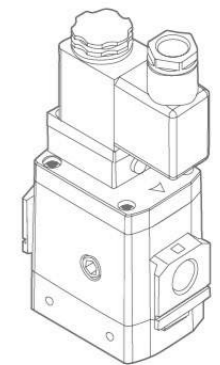
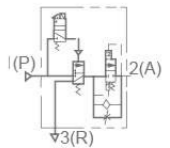
Features

This is a differential balanced valve automatically opens the air port fully when the downstream pressure is about 50% of the upstream pressure. Without a pilot, the upstream air flows downstream through the regulation needle. When an external or pneumatic solenoid signal is generated, the valve opens the main port to create full flow. It doesn't relieve the downstream circuit.

Specification

Model	XAV2000-02	XAV3000-03	XAV4000-04	XAV5000-06	XAV5000-10
Port Size	G1/4"	G3/8"	G1/2"	G3/4"	G1"
Effective sectional area (mm ²)	1(P)-2(A) 2(A)-3(R)	20 24	37 49	61 76	113 141
Applicable Pressure Range	0.3~1.0MPa				
Ambient and Fluid Temperature	0~60°C				
Coil voltage rating	DC24V, 12V, AC220, 110V				
Allow voltage fluctuation	Rated voltage-15%~+10%				
Coil insulation class	B level or the same level				
DC/Consumed power DC	3W				
AC/Apparent power AC	Start:5.6VA Keep: 3.4VA				
Port size of cap for pneumatic version	G1/8				
Lowest pressure for pneumatic version	0.2MPa				

Graphic Symbol



XAMC Series Exhaust Cleaner



Specification

Model	XAMC220-02	HAMC320-02	HAMC320-03	HAMC520-04	HAMC520-06
Port Size	G1/4	G1/4	G3/8	G1/2	G3/4
Effective sectional area(mm ²)	12	16	16	55	55
Maximum flow processing(L/min)	200	300	300	1000	1000
Model	XAMC220-02	HAMC320-02	HAMC320-03	HAMC520-04	HAMC520-06
Ambient and Fluid Temperature	5~60°C				
Muffling Effect	More than 35 decibel				
Oil mist recovery effect	More Than 99.9%				
Recycling of oil mist walk way	Female thread hole				
Element one time test pressure	< 0.1MPa				

Instructions

1. Must be installed in a vertical position.
2. The filter element should be changed, When the Inlet pressure is 0.1 MPa or used more than 1 year.
3. No exposure to organic solvents.

Features

1. XAMC exhaust cleaning machine is the new generation of energy conservation and environmental protection products.
2. Used to absorb exhaust noise, recover the waste oil and water, to keep clean.
3. Mainly used to collect the noise and oil mist from the whole system.