

XMFZ Series Right Angle Pulse Valve



Ordering Code

X **MF** **Z** - **25** - **P** **EX**

X XCPC Product
MF Pulse Valve
Z Type Code
 Z: Solenoid Control
 ZQ: Pneumatic Control
25 Orifice Size
P Thread Type
 Blank: Normal
 Thread Type
 A: Thread Type+ Insert pipe
 P: Thread Type
 S: Double Diaphragms
 J: Thread Type (Economy Type)
EX Wiring Form
 Blank: Normal Type
 EX: Ex-proof Type

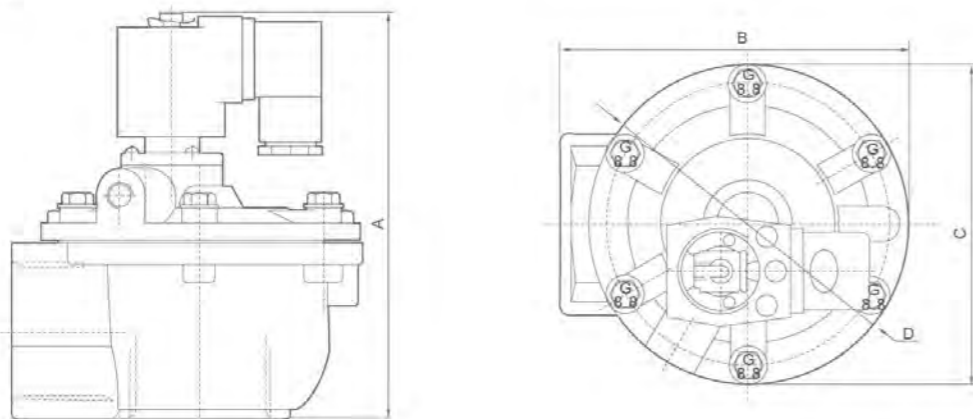
Speciality

Adopt international advanced technology.
 Used for dust remover.
 Key parts all made of imported materials.
 Pneumatic control type, solenoid control type, ex-proof solenoid control type for choose.
 Female thread connection port, easy to be mounted.

Specification

Model	XMF-Z-20A	XMF-Z-20P	XMF-Z-20	XMF-Z-25	XMF-Z-25P	XMF-Z-35P	XMF-Z-40S	XMF-Z-50S	XMF-Z-62S	XMF-Z-76S	XMF-Z-100S
Working Pressure	0.3-0.8MPa										
Ambient Temperature	-5-55℃										
Relatively Humidity	< 85%										
Working Medium	Clean Air										
Voltage	AC110V/AC220V/DC24V										
Diaphragm Life Cycles	Over 1000k Cycles										
Orifice(mm)	Φ20	Φ20	Φ20	Φ25	Φ25	Φ35	Φ40	Φ50	Φ62	Φ76	Φ100
Connection Port	G3/4"	G3/4"	G3/4"	G1"	G1"	G1 1/2"	G1 1/2"	G2"	G2 1/2"	G3"	Φ100

Overall Dimensions



Dimension Sheet

Model	XMF-Z-20A	XMF-Z-20P	XMF-Z-20	XMF-Z-25	XMF-Z-25P	XMF-Z-35P	XMF-Z-40S	XMF-Z-50S	XMF-Z-62S	XMF-Z-76S	XMF-Z-100S
A	173	124	110	110	124	142	166	202	222	245	356.5
B	145	105	90.5	90.5	105	121	132	210	210	230.5	286.5
C	-	82.5	75	75	82.5	-	-	-	-	-	-
D	Φ90	-	-	-	-	Φ112	Φ137	Φ185	Φ185	Φ200	Φ221

XMFY Series In Line Pulse Valve



Ordering Code

X **MF** - **Y** - **50** - **S** **EX**

X XCPC Product
MF Pulse Jet Valve
Y Type Code
 Y: Solenoid Control
 YQ: Pneumatic Control
50 Orifice
S Double Diaphragms
EX Wiring Form
 Blank: Normal Type
 EX: Ex-proof Type

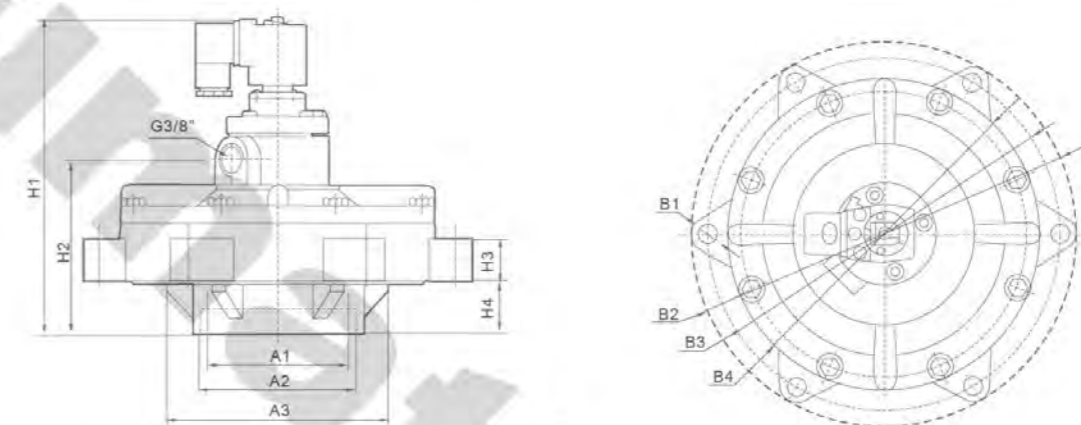
Speciality

Adopt international advanced technology
 Used for dust remover
 Key parts all made of imported materials
 Pneumatic control type, solenoid control type, ex-proof solenoid control type for choose
 Directing mounted to gas bag better blowing effect and small loss of air source.

Specification

Model	XMF-Y-50S	XMF-Y-62S	XMF-Y-76S
Working Pressure	0.3-0.8MPa		
Ambient Temperature	-5-55℃		
Relatively Humidity	< 85%		
Working Medium	Clean Air		
Voltage	AC110V/AC220V/DC24V		
Diaphragm Life Cycles	Over One Million Cycles		
Orifice(mm)	Φ50	Φ62	Φ76
Connection Port	G2"	G2-1/2"	G3"

Overall Dimensions



Dimension Sheet

Model	A1	A2	A3	B1	B2	B3	B4	H1	H2	H3	H4
XMF-Y-50S	Φ64.5	Φ78.5	Φ118	6-Φ11.5	Φ200	Φ180	Φ159	187	100	25	31
XMF-Y-62S	Φ80	Φ93.5	Φ145	6-Φ11	Φ226	Φ204	Φ185	197	107	34.5	35
XMF-Y-76S	Φ90	Φ99	Φ141	6-Φ11	Φ248	Φ227	Φ200	205	113	27	34