

2P Series 2/2 Solenoid Valve (Plastic Steel Type)



Ordering Code

2P

**Specification Code**  
2P:Two-position  
Two-way Solenoid Valve  
(Reinforced plastic  
steel type)

025

**Aperture of  
Flow Rate**  
025:2.5mm

06

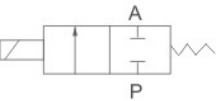
**Port Size**  
06:G1/8"  
08:G1/4"

AC220V

**Standard Voltage**  
DC12V DC24V  
AC24V 50Hz/60Hz  
AC110V 50Hz/60Hz  
AC220V 50Hz/60Hz  
AC380V 50Hz/60Hz

**Wiring Form**  
Blank:Lead wire Type  
D: Joint Connector

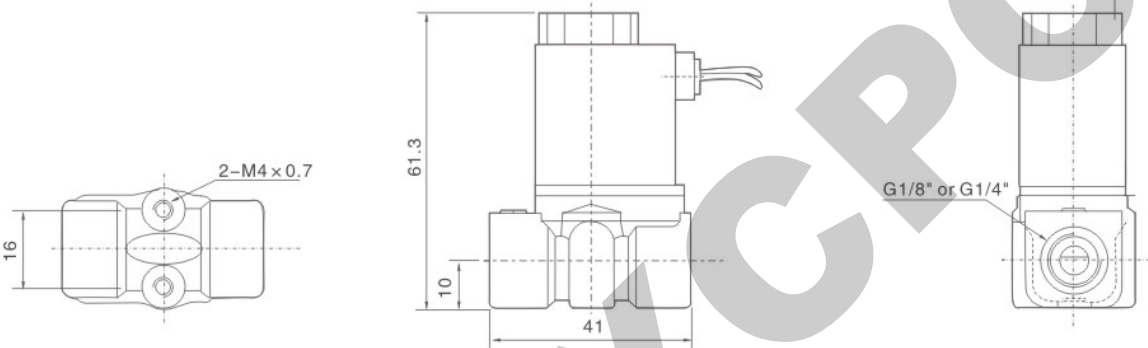
Graphic Symbol



Specification

Model	2P025-06	2P025-08
Working Medium	Air,Water,Oil,gas	
Motion Pattern	Direct Drive Type	
Type	Normal Close Type	
Aperture of Flow Rate(mm)	2.5	
CV Value	0.23	
Port Size	G1/8"	G1/4"
Operation Fluid Viscosity	20 CST (Below)	
Working-pressure	0~0.7MPa	
Max. Pressure Resistance	1.0MPa	
Operating Temperature Range	-5~+80℃	
Voltage Range	± 10%	
Material of Body	Engineering Plastic Steel	
Material of Oil Seal	NBR EPDM or VITON	

Overall Dimensions



2W(UD) Series 2/2 Direct Drive Type Solenoid Valve (Small Aperture)



Ordering Code

2W

**Specification Code**  
2W:Two-position Two-way  
solenoid valve direct drive type  
2WH:Two-position Two-way  
solenoid valve(High pressure  
direct drive Type)

025

**Aperture of  
Flow Rate**  
012:1.2mm  
020:2.0mm  
025:2.5mm  
040:4.0mm

08

**Port Size**  
06:G1/8"  
08:G1/4"  
10:G3/8"

F

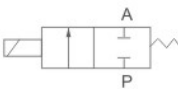
**Initial Estate**  
Blank:Pipe Jiont  
Ttype  
F: Flange Type

AC220V

**Standard Voltage**  
DC12V DC24V  
AC24V 50Hz/60Hz  
AC36V 50Hz/60Hz  
AC110V 50Hz/60Hz  
AC220V 50Hz/60Hz  
AC380V 50Hz/60Hz

**Wiring Form**  
Blank:Lead Wire Type  
D:Joint Connector  
E:Blast-proof Coil  
G:Water-proof Coil

Graphic Symbol

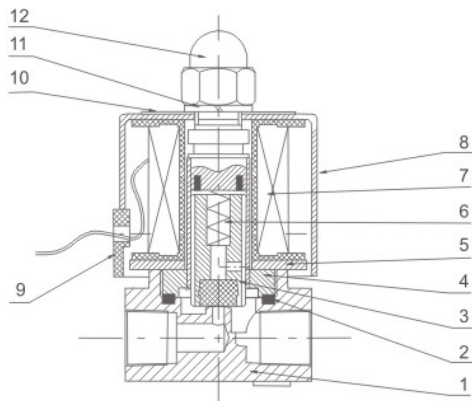


Specification

Model	2W025-06	2W025-08	2W040-10	2WH012-06	2WH012-08	2WH020-10
Working Medium	Air,Water,Oil,Gas					
Motion Pattern	Direct Drive Type					
Type	Normal Close Type					
Aperture of Flow Rate(mm)	2.5		4	1.2		2
CV Value	0.23		0.60	0.05		0.15
Port Size	G1/8"	G1/4"	G3/8"	G1/8"	G1/4"	G3/8"
Operation Fluid Viscosity	20 CST (Below)					
Working-pressure	Air,Water,Oil,Gas:0~0.7MPa			Air,Water,Oil:0~2.0MPa		
Max. Pressure Resistance	1.0			3.5		
Operating Temperature Range	-5~+80℃					
Voltage Range	± 10%					
Material of Body	Brass					
Material of Oil Seal	NBR EPDM or VITON					

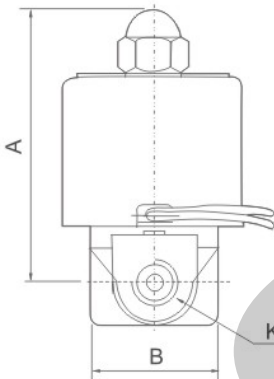
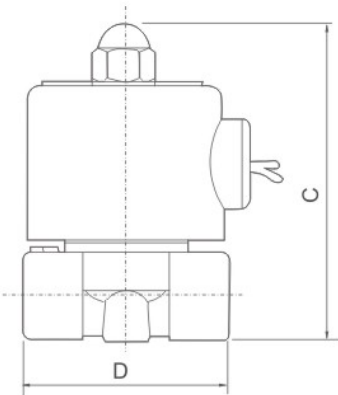
2W(UD) Aperture 2/2 Direct Drive Type Solenoid Valve(Small Aperture)

Internal structure



NO	
1	Body Of Valve
2	O-ring
3	Assembly Of Iron Core
4	Assembly Of Iron Core
5	Magnetic Plate
6	Spring
7	Assembly Of Coil
8	Iron Cover
9	Cord-locks
10	Name Plate
11	Gasket
12	Head Cover Nut

Overall Dimensions



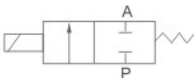
Dimension Sheet

Symbol/Model	A	B	C	D	K(PT)
2W025-06	66	30.3	75	41.5	G1/8"
2W025-08	66	30.3	75	41.5	G1/4"
2W040-10	74	32.2	85.5	53	G3/8"
2WH012-06	66	30.3	75	40.5	G1/8"
2WH012-08	66	30.3	75	40.5	G1/4"
2WH020-10	74	32.3	85.5	53	G3/8"

2W(UW) Series 2/2 Direct Drive Type Solenoid Valve(Large Aperture)



Graphic Symbol



Ordering Code

<b>2W</b>	<b>160</b>	<b>15</b>	<b>F</b>	<b>AC220V</b>	
<b>Specification Code</b> 2W: Two-position two-way solenoid valve (direct drive type)	<b>Aperture of Flow Rate</b> 160: 16mm 200: 20mm 250: 25mm 350: 35mm 400: 40mm 500: 50mm	<b>Port Size</b> 10: G3/8" 15: G1/2" 20: G3/4" 25: G1" 35: G1 1/4" 40: G1 1/2" 50: G2"	<b>Initial Estate</b> Blank: Pipe Joint Type F: Flange Type	<b>Standard Voltage</b> DC12V AC24V AC36V AC110V AC220V AC380V DC24V 50Hz/60Hz 50Hz/60Hz 50Hz/60Hz 50Hz/60Hz 50Hz/60Hz	<b>Wiring Form</b> Blank: Lead Wire Type D: Joint Connector

Specification

Model	2W160-10	2W160-15	2W200-20	2W250-25	2W350-35	2W400-40	2W500-50
Working Medium	Air, Water, Oil, gas						
Motion Pattern	Direct Drive Type						
Type	Normal Close Type / Normal Open Type						
Aperture of Flow Rate(mm)	16	20	25	35	40	50	
CV Value	4.8	7.6	12	24	29	48	
Port Size	G3/8"	G1/2"	G3/4"	G1"	G1 1/4"	G1 1/2"	G2"
Operation Fluid Viscosity	20 CST (Below)						
Working-pressure	Air: 0~0.7MPa    Water: 0~0.5MPa    Oil: 0~0.5MPa    Gas: 0~7MPa						
Max. Pressure Resistance	1.0MPa						
Operating Temperature Range	-5~+80℃						
Voltage Range	±10%						
Material of Body	Brass						
Material of Oil Seal	NBR EPDM or VITON						