

2P Series 2/2 Solenoid Valve (Plastic Steel Type)



Ordering Code

2P — **025** — **06** — **AC220V** —

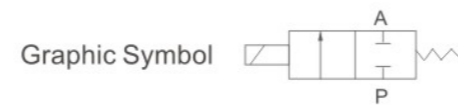
Specification Code
2P: Two-position Two-way Solenoid Valve (Reinforced plastic steel type)

Aperture of Flow Rate
025: 2.5mm

Port Size
06: G1/8"
08: G1/4"

Standard Voltage
DC12V DC24V
AC24V 50Hz/60Hz
AC110V 50Hz/60Hz
AC220V 50Hz/60Hz
AC380V 50Hz/60Hz

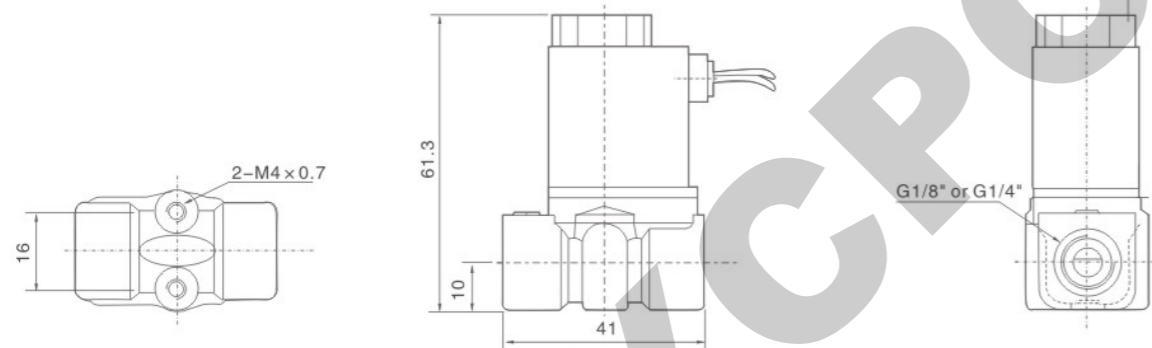
Wiring Form
Blank: Lead wire Type
D: Joint Connector



Specification

Model	2P025-06	2P025-08
Working Medium	Air, Water, Oil, Gas	
Motion Pattern	Direct Drive Type	
Type	Normal Close Type	
Aperture of Flow Rate (mm)	2.5	
CV Value	0.23	
Port Size	G1/8"	G1/4"
Operation Fluid Viscosity	20 CST (Below)	
Working-pressure	0~0.7MPa	
Max. Pressure Resistance	1.0MPa	
Operating Temperature Range	-5~+80°C	
Voltage Range	±10%	
Material of Body	Engineering Plastic Steel	
Material of Oil Seal	NBR EPDM or VITON	

Overall Dimensions



2W(UD) Series 2/2 Direct Drive Type Solenoid Valve (Small Aperture)



Ordering Code

2W — **025** — **08** — **F** — **AC220V** —

Specification Code
2W: Two-position Two-way solenoid valve direct drive type
2WH: Two-position Two-way solenoid valve (High pressure direct drive Type)

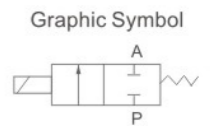
Aperture of Flow Rate
012: 1.2mm
020: 2.0mm
025: 2.5mm
040: 4.0mm

Port Size
06: G1/8"
08: G1/4"
10: G3/8"

Initial Estate
Blank: Pipe Joint T Type
F: Flange Type

Standard Voltage
DC12V DC24V
AC24V 50Hz/60Hz
AC36V 50Hz/60Hz
AC110V 50Hz/60Hz
AC220V 50Hz/60Hz
AC380V 50Hz/60Hz

Wiring Form
Blank: Lead Wire Type
D: Joint Connector
E: Blast-proof Coil
G: Water-proof Coil



Specification

Model	2W025-06	2W025-08	2W040-10	2WH012-06	2WH012-08	2WH020-10
Working Medium	Air, Water, Oil, Gas					
Motion Pattern	Direct Drive Type					
Type	Normal Close Type					
Aperture of Flow Rate (mm)	2.5	4	1.2	2		
CV Value	0.23	0.60	0.05	0.15		
Port Size	G1/8"	G1/4"	G3/8"	G1/8"	G1/4"	G3/8"
Operation Fluid Viscosity	20 CST (Below)					
Working-pressure	Air, Water, Oil, Gas: 0~0.7MPa			Air, Water, Oil: 0~2.0MPa		
Max. Pressure Resistance	1.0			3.5		
Operating Temperature Range	-5~+80°C					
Voltage Range	±10%					
Material of Body	Brass					
Material of Oil Seal	NBR EPDM or VITON					