

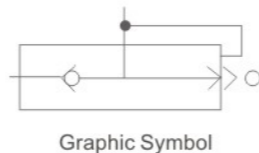
XKP Series Quick Exhaust Valve



Ordering Code

XKP
Series Code
XKP:Quick Exhaust Valve

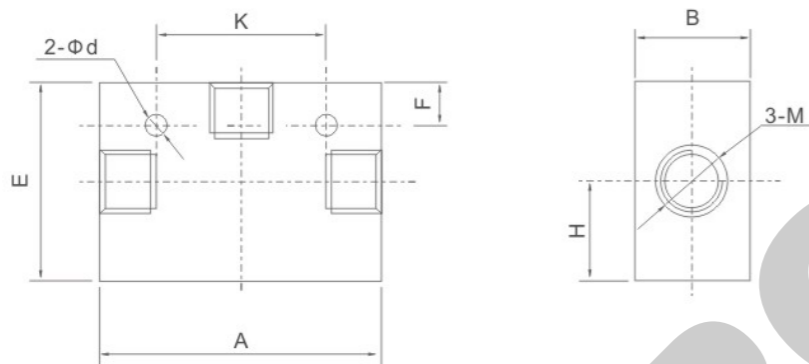
L15
Port Size
L6:G1/8"
L8:G1/4"
L10:G3/8"
L15:G1/2"
L20:G3/4"
L25:G1"
L32:G1-1/4"
L40:G1-1/2"
L50:G2"



Specification

| Model | XKP-L6 | XKP-L8 | XKP-L10 | XKP-L15 | XKP-L20 | XKP-L25 | XKP-L32 | XKP-L40 | XKP-L50 | |
|-------------------------------------|----------------|--------|---------|---------|---------|---------|---------|---------|---------|-----|
| Section Area | P→A | 10 | 20 | 40 | 60 | 110 | 190 | 300 | 400 | 650 |
| | A→□ | 20 | 40 | 60 | 110 | 190 | 300 | 400 | 650 | 900 |
| Leak Out Flow(cm ³ /min) | ≤10 | | ≤25 | | ≤50 | | ≤70 | | | |
| Working Medium | Compressed Air | | | | | | | | | |
| Operating Temperature Range | -5~+60°C | | | | | | | | | |
| Working-pressure | 0.05~1.2MPa | | | | | | | | | |

Overall Dimensions



Dimension Sheet

| Model | M | A | K | B | E | H | F | d |
|---------|--------|-----|-----|-----|-----|----|----|----|
| XKP-L6 | G1/8 | | | | | | | |
| XKP-L8 | G1/4 | 75 | - | 36 | 41 | 10 | - | - |
| XKP-L10 | G3/8 | 82 | 58 | 44 | 60 | 23 | 8 | 7 |
| XKP-L15 | G1/2 | | | | | | | |
| XKP-L20 | G3/4 | 128 | 98 | 72 | 95 | 36 | 8 | 10 |
| XKP-L25 | G1 | 158 | 126 | 88 | 112 | 44 | 10 | 10 |
| XKP-L32 | G1-1/4 | | | | | | | |
| XKP-L40 | G1-1/2 | | | | | | | |
| XKP-L50 | G2 | 190 | 148 | 102 | 130 | 52 | 10 | 12 |

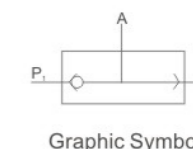
ST Series Shuttle Valve



Ordering Code

ST
Series Code
ST:Shuttle Valve

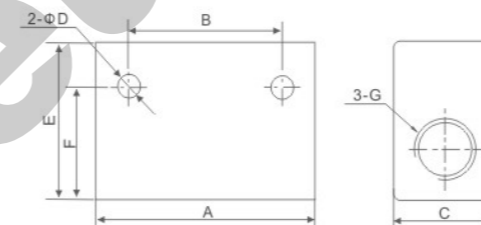
01
Port Size
01:G1/8"
02:G1/4"
03:G3/8"
04:G1/2"
06:G3/4"
08:G1"



Specification

| Model | ST-01 | ST-02 | ST-03 | ST-04 | ST-06 | ST-08 |
|-----------------------------|--------------------|-------------------|-------------------|-------------------|--------------------|--------------------|
| Working Medium | Air | | | | | |
| Effective Section Area | 7.5mm ² | 21mm ² | 40mm ² | 60mm ² | 110mm ² | 190mm ² |
| Port Size | G1/8" | G1/4" | G3/8" | G1/2" | G3/4" | G1" |
| Working Pressure Range | 0~1.0MPa | | | | | |
| Operating Temperature Range | -5~60°C | | | | | |

Overall Dimensions



Dimension Sheet

| Model | A | B | C | D | E | F | G |
|-------|-----|----|----|-----|----|------|-------|
| ST-01 | 40 | 24 | 16 | 4.5 | 25 | 20.5 | G1/8" |
| ST-02 | 50 | 35 | 22 | 5.5 | 35 | 25 | G1/4" |
| ST-03 | 75 | 48 | 30 | 7 | 50 | 42 | G3/8" |
| ST-04 | 75 | 48 | 30 | 7 | 50 | 42 | G1/2" |
| ST-06 | 110 | 72 | 40 | 7 | 70 | 58 | G3/4" |
| ST-08 | 110 | 72 | 40 | 7 | 70 | 58 | G1" |

CV Series Vacuum Valve



Ordering Code

CV
Series Code
CV:Vacuum Valve

15L
Port Size
10L:G1/8"
15L:G1/4"
20L:G3/8"

Specification

| Model | CV-10L | CV-15L | CV-20L |
|--------------------------|-------------------------|--------|--------|
| Working Medium | Air | | |
| Working pressure | 1.0MPa | | |
| Shortest Excitation Time | 0.05 Second | | |
| Leakage Volume | ≤10cm ³ /min | | |

Overall Dimensions

