

XCK Series Clamping Cylinder



XCKA 50 x 50-S-Y

XCKB 63 x 75-S-Y

Welding equipment for automotive use

1. Disassemble
2. Light weight and Compact
3. No Lubrication
4. Build-in speed control
5. No need dust cover
6. Can be used for welding equipment which used to generate the electromagnetice

Ordering Code

XCK **A** **50** × **100** — **S** — **Y**

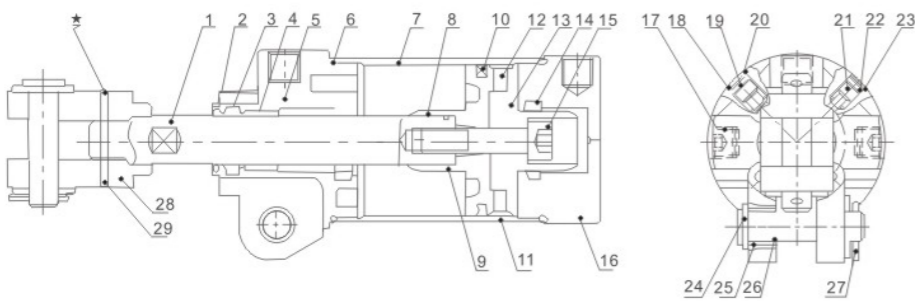
Series Code **Split Pin Type** **Cylinder Bore** **Stroke** **Magnet Code** **Width of earring**

A:A Type
B:B Type
(Only available for 40-63mm)

Blank:Without Magnet
S:With Magnet
HS:With Powerful Magnet

Blank:No Accessory
B: With Y Joint

Internal structure



NO	Designation	NO	Designation
1	Piston rod	16	Rear cover
2	Dust ring	17	Limit screw
3	Front cover O-ring	18	O-ring
4	Slide bush	19	Speed control screw
5	Front cover	20	External retainer ring
6	O-ring	21	Cushion control screw
7	Aluminum tube	22	O-ring
8	Piston	23	External retainer ring
9	Piston rod O-ring	24	Gasket
10	Piston O-ring	25	Brass bush
11	Wear ring	26	PIN
12	Magnet	27	Split pin
13	Magnet base	28	Y
14	Cushion O-ring	29	Spring pin
15	Hexagon screw		

Specification

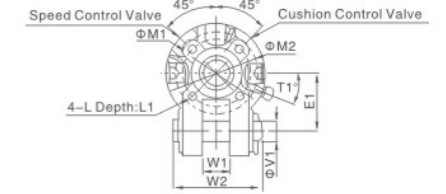
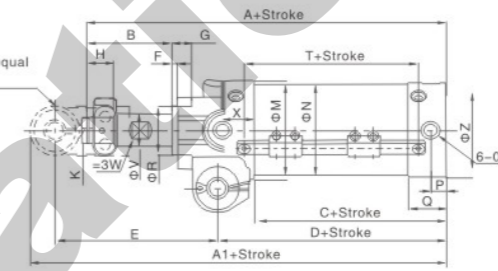
Bore(mm)	40	50	63	80
Working Medium	Air			
Ensured Pressure Resistance	1.5Mpa(15kgf/cm ²)			
Max.Working pressure	1.0Mpa(10kgf/cm ²)			
Min.Working pressure	0.1Mpa(1kgf/cm ²)			
Temperature Range	-5-60°C			
Piston Speed	50-500mm/s			
Air Buffer	Yes			
Lubrication	No Need			
Thread Tolerance	6H			
Stroke Tolerance	+1.5 0 (mm)			
Speed Controller	Yes			
Mounting Type	Double Ear Ring			
Rc(PT)Port size	1/4"		3/8"	

XCK Series Clamping Cylinder

Overall Dimensions

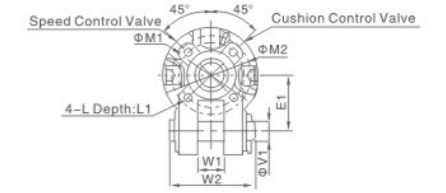
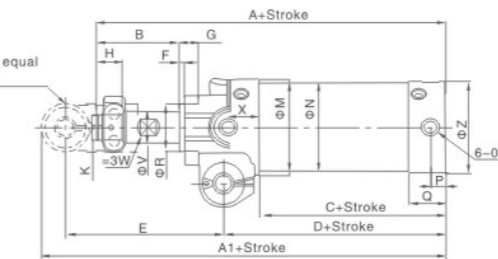
Φ40, 50, 63 With manget

When have Y Joint, the joint width is equal to the width of front cover hinge ear



Φ40, 50, 63

When have Y Joint, the joint width is equal to the width of front cover hinge ear

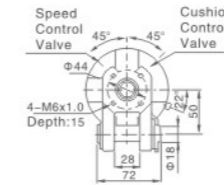
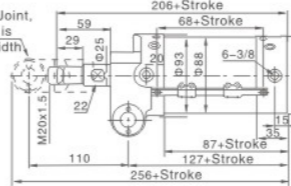


Dimension Sheet

Bore size	A	A1	B	C	D	E	E1	F	G	H	K	L	L1	M	M1	M2	N	O	P	Q	R	V	V1	W	W1		W2	X	Z	T	T1
	XCKA	XCKB																													
40	162	196	51	59	84	97	35	3	11.5	16	M16x1.5	M6x1	13	52	40	50	45	1/4	9	21	30	20	12	17	16.5	19.5	54	20	47	54	24
50	165	199	51	65	87	97	35	3	11.5	16	M16x1.5	M6x1	12	60	40	50	55	1/4	9.5	23	30	20	12	17	16.5	19.5	54	19	57	54	22
63	167	201	51	67	87	97	35	3	11.5	16	M16x1.5	M6x1	12	74	40	50	68	1/4	9.5	23	30	20	12	17	16.5	19.5	54	19	70	54	22

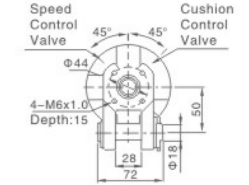
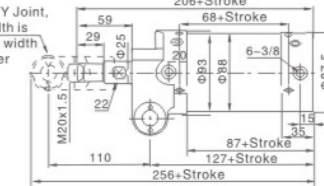
Φ80 With manget

When have Y Joint, the joint width is equal to the width of front cover hinge ear



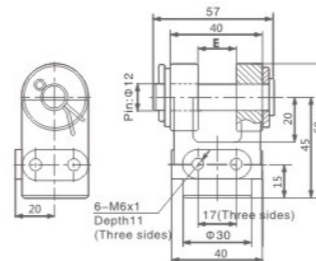
Φ80

When have Y Joint, the joint width is equal to the width of front cover hinge ear



Y Joint Overall Dimensions and Ordering Code

Φ40, 50, 63



Model	Fit for Bore Size	E
XCKA50-Y	40, 50, 63	16.5
XCKB50-Y	40, 50, 63	19.5

Φ80

