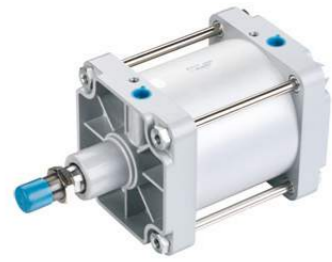
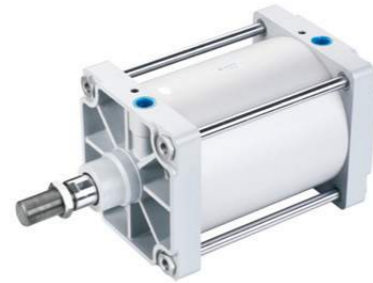


DNG Series ISO15552 Standard Cylinder



DNG 200 x 100-S



DNG 250 x 200-S

Ordering Code

DNG × **160** × **100** - **25** - **S** - □

Series Code
DNG:ISO15552 Standard Double Action Type
DNGD:ISO15552 Standard Two Axis Double Action Type
DNGJ:ISO15552 Two Axis Stroke Adjust Type

Cylinder Bore
160mm-320mm

Stroke
25: 25mm
50: 50mm
75: 75mm

Adjust Stroke
25: 25mm
50: 50mm
75: 75mm

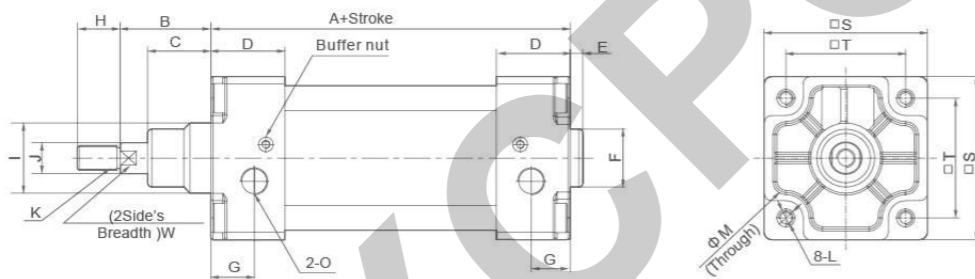
Magnet Code
Blank: Without Magnet
S: With Magnet

Fixed Type
Blank: Normal type
LB: Front and back fixed type
FA: Front cover fixed type (Front flange type)
FB: Back cover fixed type (Back flange type)
CA: Back cover fixed type (Single earring)
CB: Back cover fixed type (Double earring)

Specification

Bore(mm)	160	200	250	320
Motion Pattern	Double Action			
Working Medium	Air			
Fixed Type	Normal type FA type FB type CA type CB type LB type TC type			
Working Pressure Range	0.1~1.0MPa			
Ensured Pressure Resistance	1.5MPa			
Operating Temperature Range	-5~60°C			
Operating Speed Range	50~500mm/s			
Buffer Type	Adjustable Buffer			
Port Size	G3/4"		G1"	
Lubrication	Not required (Use Turbine oil ISO Vg32 when necessary)			

Overall Dimensions



Dimension Sheet

Bore/Symbol	A	B	C	D	E	F	G	H	I	J	K	L	M	S	T	O
160	180	80	60	50	6	φ65	25	72	φ65	40	M36×2	M16	φ25 dp30	180	140	G3/4"
200	180	95	70	50	6	φ75	25	72	φ75	40	M36×2	M16	φ25 dp30	220	175	G3/4"
250	200	105	67	52	10	φ90	31	84	φ90	50	M42×2	M20	φ30	270	220	G1"
320	218	120	82	52	10	φ110	31	96	φ110	63	M48×2	M24	φ34	340	270	G1"

SI Series ISO6431 Standard Cylinder



SI 50X100



SIJ 50X100-25

Ordering Code

SI × **50** × **50** - **25** - **S** - □

Series Code
SI:ISO6431 Standard Double Action Type
SID:ISO6431 Standard Two Axis Double Action Type
SIJ:ISO6431 Two Axis Stroke Adjust Type

Cylinder Bore
32mm-200mm

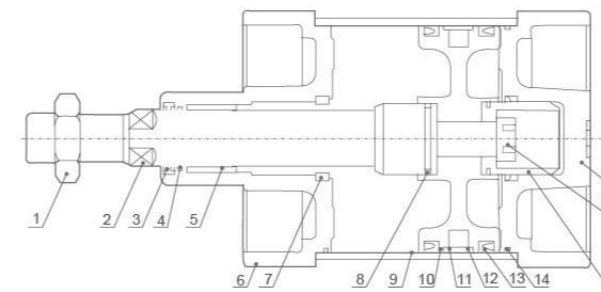
Stroke
25: 25mm
50: 50mm
75: 75mm

Adjust Stroke
25: 25mm
50: 50mm
75: 75mm

Magnet Code
Blank: Without Magnet
S: With Magnet

Fixed Type
Blank: Normal type
LB: Front and back fixed type
FA: Front cover fixed type (Front Flange Type)
FB: Back cover fixed type (Back Flange Type)
CA: Back cover fixed type (Single Earring)
CB: Back cover fixed type (Double Earring)
TC: Central trunnion type
TC-M: Central trunnion type attaching foot seat

Internal structure



NO	Designation	NO	Designation
1	Piston Rod Nut	10	Piston
2	Piston rod	11	Wearing
3	Front cover seal ring	12	Magnet(Optional)
4	O-Ring	13	Piston O-Ring
5	Bearing	14	Pipe wall O-Ring
6	Front cover	15	Damping
7	Buffering O-Ring	16	Hex socket screw
8	Piston rod O-Ring	17	Back cover
9	Barrel		

Specification

Bore(mm)	32	40	50	63	80	100	125	160	200
Motion Pattern	Double Action								
Working Medium	Air								
Fixed Type	Normal type FA type FB type CA type CB type LB type TC type								
Working Pressure Range	0.1~0.9MPa								
Ensured Pressure Resistance	1.35MPa								
Operating Temperature Range	-5~70°C								
Operating Speed Range	50~800mm/s								
Buffer Type	Adjustable Buffer								
Buffer Stroke				24			32		
Port Size	G1/8"	G1/4"	G3/8"	G1/2"	G3/4"				